

# Rich Seams: The South Wales Miners' Library's Next Step

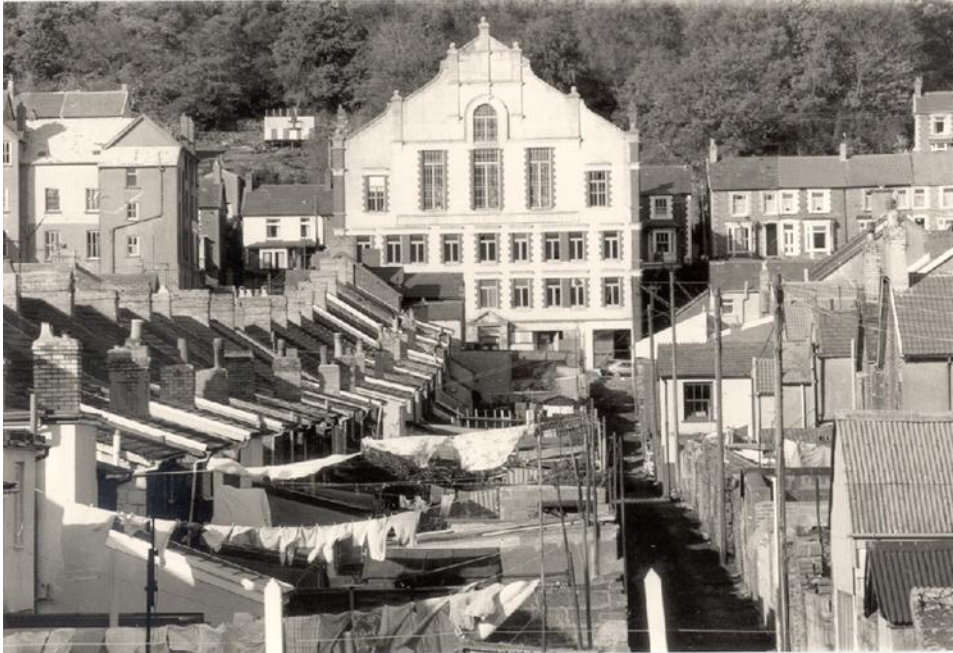
Siân Williams

Librarian, South Wales Miners' Library

[s.f.williams@swansea.ac.uk](mailto:s.f.williams@swansea.ac.uk)



# Miners' Institutes



**Abercynon Workmen's Hall and Institute**

Photo courtesy of the South Wales Coalfield Collection,  
Swansea University



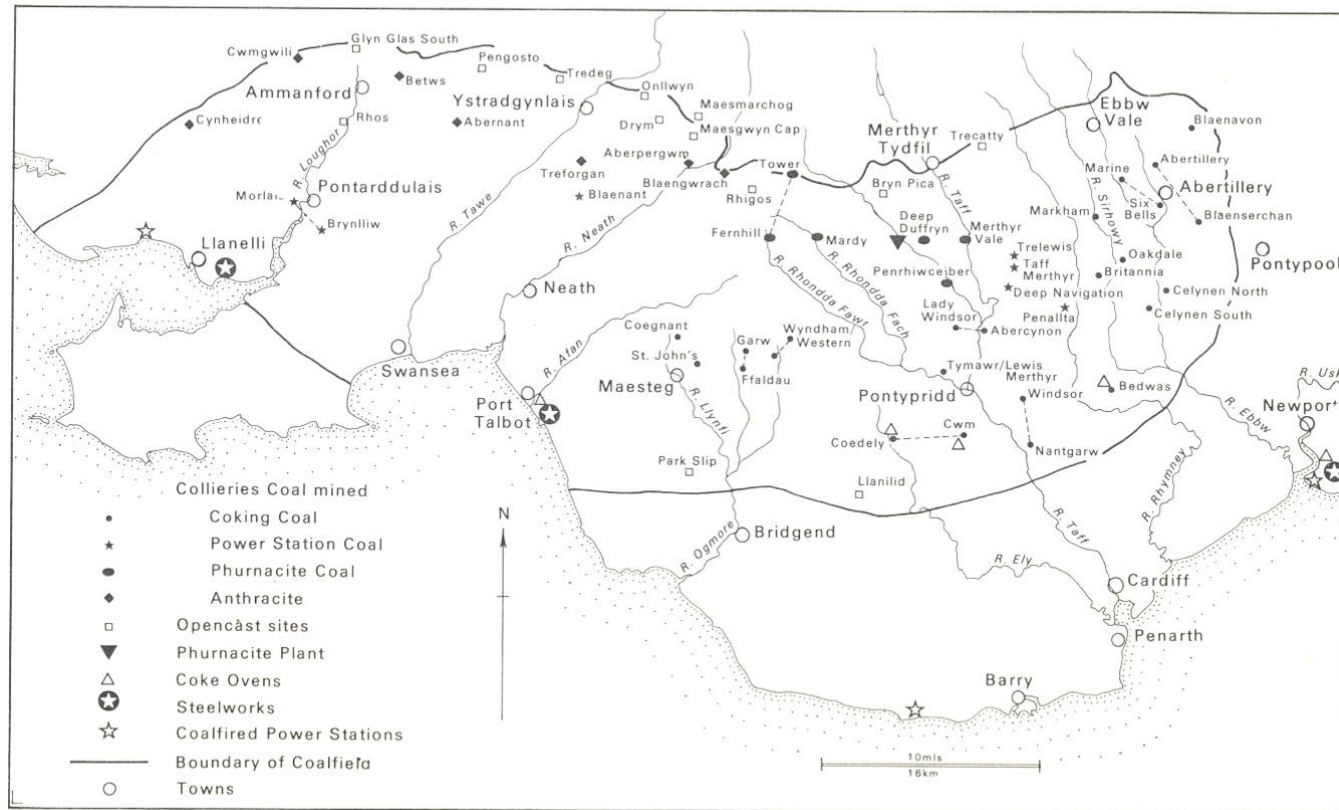
Parc & Dare Workmen's Institute in May 1974. It was  
built in 1892. Photo courtesy of Hywel Francis

# Swansea....





# Map of the South Wales Coalfield



Map courtesy of the National Union of Mineworkers (South Wales Area)



# Swansea University



SWANSEA UNIVERSITY  
PRIFYSGOL ABERTAWE

[www.swansea.ac.uk](http://www.swansea.ac.uk)



## Bay Campus – opened in September 2015

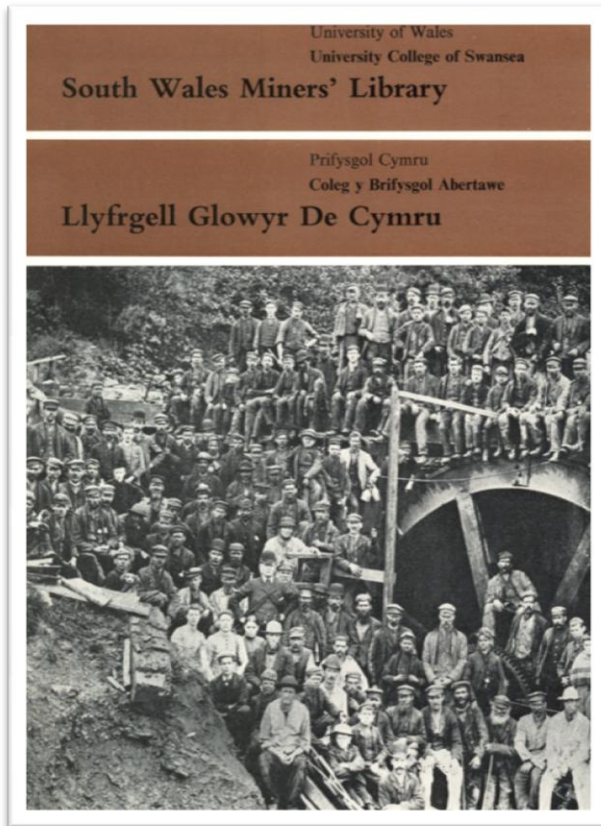


# Hendrefoelan Student Village





# Maes-yr-Haf 1973-1984





# Hendrefoelan House 1984-2006



# Coach House Building, Hendrefoelan 2006-





# First NUM residential course in 1975



# NUM day release class in the late 1980s





# Banwen Library



## DOVE Workshop Course Provision 2016/17

<u>Monday</u>	<u>Time</u>
Using iPads	10.00 am - 12 noon
Digital Lifestyle	6.30 pm - 8.30 pm

<u>Tuesday</u>	<u>Time</u>
Return to Learn (English)	10.00 am - 1.00 pm
Art	1.00 pm - 4.00 pm
Essential Skills in (Internet, E-Mail, Word and File Management)	12.30 pm - 3.00 pm

<u>Wednesday</u>	<u>Time</u>
HE Certificate in Digital Media	9.30 am - 1.30 pm
<u>BA (Hons) Humanities:</u>	
<u>Level 1</u>	
Tetraduction to Psychology (1)	9.45 am - 11.45 am
Welsh History: 1914 to the Present Day	12.45 pm - 2.45 pm
<u>Levels 2 and 3</u>	
From the Tudors to the Early 20th Century	9.45 am - 11.45 am
Social Psychology	12.30 pm - 2.30 pm

<u>Thursday</u>	<u>Time</u>
Return to Learn (Maths)	10.00 am - 1.00 pm
HE Diploma in Digital Media	9.30 am - 1.30 pm
Level 3 Counselling Theory & Practice	10.00 am - 12 noon

## DOVE Workshop Course Provision 2016/17

<u>Friday</u>	<u>Time</u>
Digital Photography	10.00 am - 12 noon
Digital Imaging	1.00 pm - 3.00 pm

### New courses: Days and times to be arranged

- \* Pre Access to Health And Social Care
- \* Access to Health and Social Care
- \* English & Maths GCSE
- \* Webwise for Work
- \* Counselling Skills
- \* Welsh for Beginners
- \* Welsh Culture
- \* Child Development
- \* Youth/Play Work

### New FREE taster sessions for November 2016:

A History of Welsh Sport  
Wednesday 2nd November, 12.30 pm - 2.30 pm  
Creative Writing  
Wednesday 9th November, 12.30 pm - 2.30 pm  
Psychology of the Media  
Wednesday 16th November, 12.30 pm - 2.30 pm

For more detailed information about any of the courses please do not hesitate to contact us.

The courses listed in this leaflet have fees attached to them, contact a member of staff for information on the fees and financial support available.

Interested in taking up a new hobby? A variety of clubs are also held at the centre on various days and times, contact us for more details.

- \* Crochet
- \* Family History
- \* French
- \* Sparkles Jewellery
- \* Sugarcraft

## Other Services available at DOVE Workshop

- ⇒ Advice and Guidance.
- ⇒ Support with Job Search and CV Writing.
- ⇒ FREE Access to IT/Internet.
- ⇒ Family and Individual Support.
- ⇒ Cwm-Ni Iach Healthy Company. A project to support people's mental health and wellbeing.
- ⇒ The Open University in Wales 'Pathways to Success' On-line Learning Programme.
- ⇒ A branch of the South Wales Miners' Library.
- ⇒ Dovecote Day Nursery: A bilingual day nursery for children between birth-five. Please ring 01639 700024, ext. 3 for more details.
- ⇒ FREE P.C. Advisory Clinic every Thursday please ring for opening times.

For further information on any of the details provided in this leaflet please contact us on:

☎ 01639 700024

E-mail: [doveworkshop@btconnect.com](mailto:doveworkshop@btconnect.com)

or if you prefer call in and see us for a friendly chat.

### Café Sam Helen

#### Opening Times:

Monday - Friday 9.00 am - 3.00 pm  
Sunday 11.30 am - 2.00 pm

We serve Sunday lunch, breakfasts, lunch, snacks, fresh coffee etc.

☎ 01639 700024, ext. 2 for bookings.

E-mail: [cafesamhelen@btconnect.com](mailto:cafesamhelen@btconnect.com)

☒ Café Sam Helen

DOVE Workshop is an approved Agored Cymru recognised centre and a member of Neath Port Talbot Adult Learning Network

# Books – Miners' Institute collections



Oakdale Institute Library



# Books – personal collections



Brinley Griffiths

Photo courtesy of Hywel Francis

# Other printed material

- Periodicals
- Pamphlets
- Newspaper Cuttings





## Posters



# Posters





# Banners



Photo courtesy of Hywel Francis



## Students hunt lost banners from old miners' lodges

SWANSEA STUDENTS are seeking help in tracing missing miners' union lodge banners which they want to put in a new miners' archive library.

The students, who are compiling the library for South Wales miners, have already gathered more than 40 banners.

They will go on display at the city's University College campus on October 20. This is the day marking the 80th anniversary of the founding of the South Wales Miners' Federation—the forerunner in Wales of the National Union of Mineworkers.

Most of the banners are on loan from NUM lodges, but many of those from non-closed lodges will remain permanently at the new library in Sully Road. The library will be formally opened on anniversary day.

Two banners the students are particularly keen on adding to their display are a red Russian flag, presented to the South Wales miners soon after the 1924 strike, and a lodge banner from Xaver Colliery, Pen-y-Grain, Rhondda.



# Oral History



Merfyn Jones interviewing John Evans, Swansea,  
in 1973 (SWCC: AUD/275)



# Video interviews



Kim Howells filming in Abercwmboi in December 1981

# Research Collections





# Our new home?



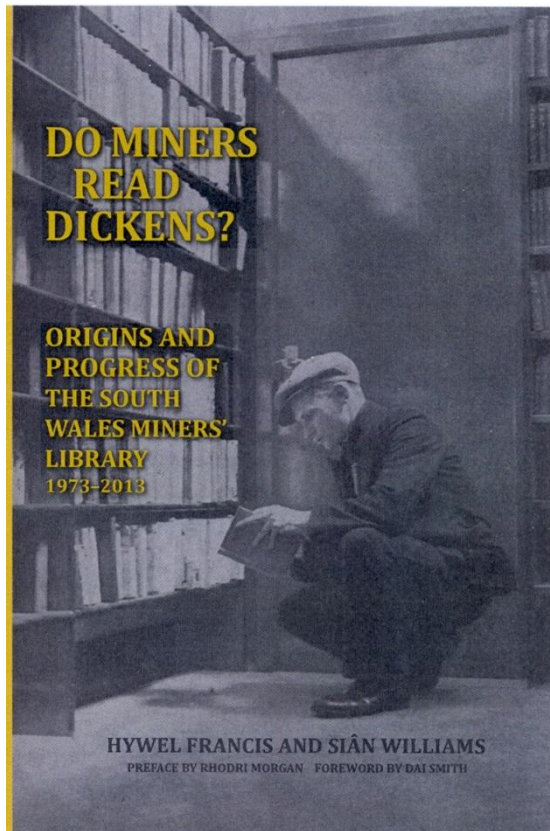
# South Wales Miners' Library team





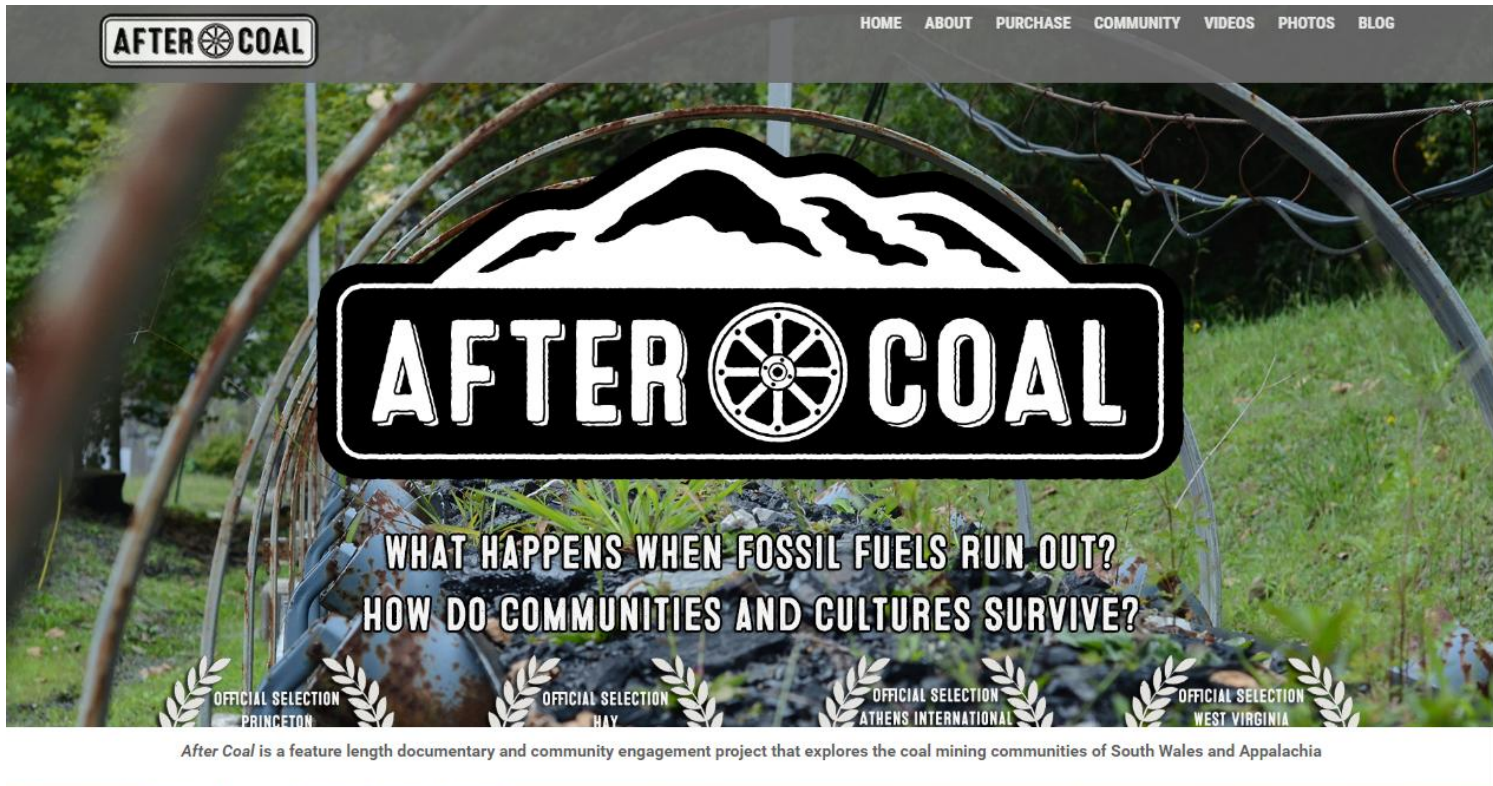
# Breaking down barriers.... ....and providing easy access















Tolpuddle Martyrs' Festival

Smithsonian Folklife Festival,  
Washington DC



## Miners who paid for Maesteg Hospital celebrated with plaque

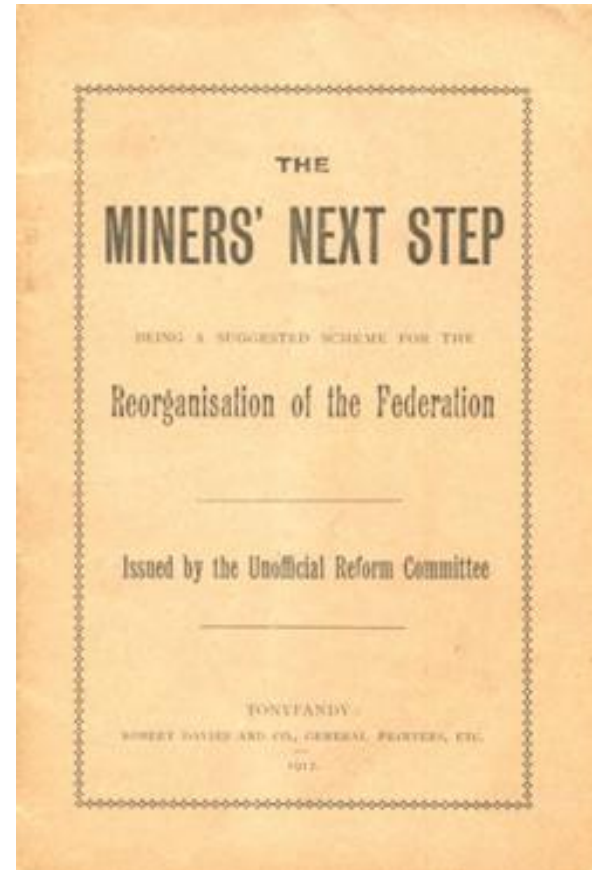
29 October 2016 | South East Wales

Share





# The South Wales Miners' Library Next Step....



**Thanks for listening.**

**Any questions?**

