

B40  
2055  
2444

Widjaja, Luke  
Griffith, Kyron Waykuan  
MI Felix German TNM: 2000+ (2.1)  
[Winslow, Elliott]

1.e4 c5 2.Nf3 e6 3.g3

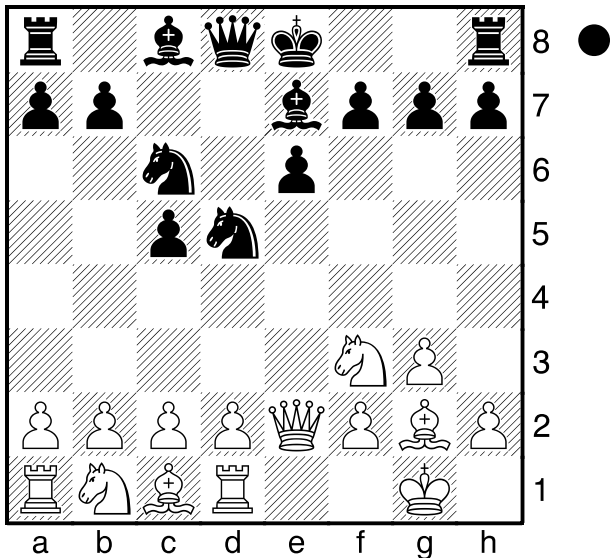
This amorphous fianchetto can be rather annoying against ...e6. 3...Nc6 4.Bg2 Nf6 5.Qe2

[ 5.d3 d5 6.Nbd2 Be7 7.0-0 0-0 8.Re1 is a huge stage position, scene of thousands of epic battles. ]  
[ 5.Nc3 d5 6.exd5 exd5 7.d4 is another sort of typical engagement. ]

5...d5

[ 5...e5!? is a hard change of pace to make, but could well be best. ]

6.exd5 Nxd5 7.0-0 Be7 8.Rd1



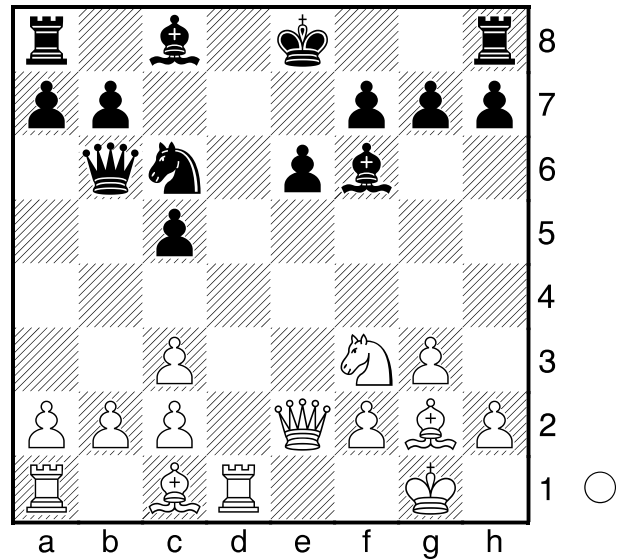
Bf6?!

[ 8...0-0 9.d4 sees White's jump in development causing troubles. ]  
[ Black still needs something radical to show up White's maneuver as a bit artificial: 8...Qb6!? ]  
[ or 8...Nd4!? ]

9.Nc3 Nxc3?

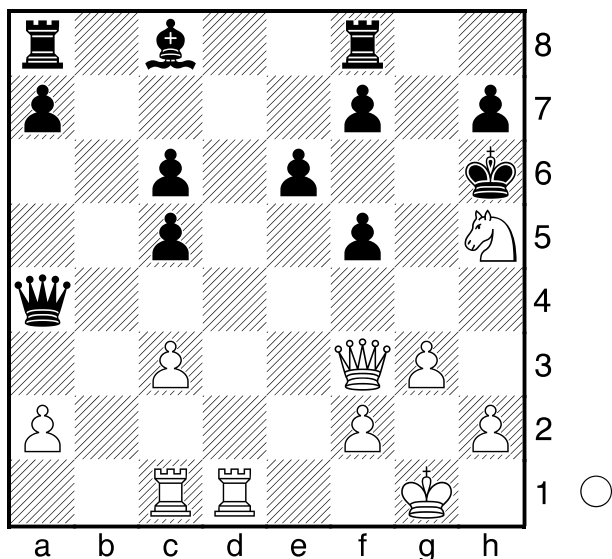
[ 9...0-0 10.Ne4 Be7 11.d4± ]

10.dxc3 Qb6



11.Bg5! 'Inviting' Kyron to go pawn hunting 11...Qxb2 All but fatal, but completing development was going to be problematic for Black in any case. 12.Bxf6 gxf6 13.Nd2! A star move! The knight aims for f6 and d6. 13...Qxc2 14.Bxc6+!? Certainly good, [but even better was 14.Qb5! 0-0 ( 14...Bd7 15.Ne4! ) 15.Ne4! and Rd2 is going to trap Black's queen! ] 14...bxc6 15.Qf3 0-0 16.Ne4 f5 17.Nf6+ Kg7 18.Rac1 Qa4 19.Nh5+ Kh6 [ 19...Kg8 20.Qe3! ]

(Diagram)



**20.Nf4**

[ 20.c4!+- ]

**20...Kg7**

[ 20...f6 21.Qh5+ Kg7 22.Qh4 (threatening the queen) readies Qa5 23.Nh5+ Kg6 24.g4 ]

**21.Nh5+ Kh6 22.Nf4?? Kg7**

I guess Luke just wasn't up to beating a 2400 in a handful of moves just yet, and settles for a draw.

1/2-1/2

□ **Urquhart, Joe S**

■ **Seitzer, Phillip**

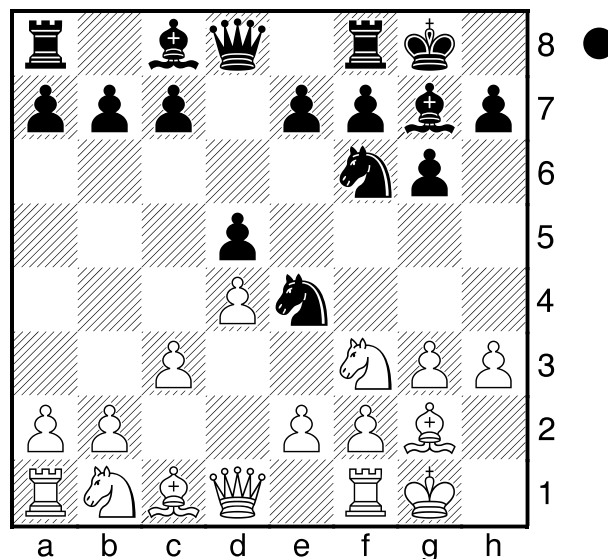
MI Felix German TNM: 2000+ (2.2)

[Winslow, Elliott]

Seltzer wins a pawn after an unusual opening by both players (mostly Joe), and brings it to a win -- to be the only player with a perfect score. 1.Nf3 d5 2.d4 Nf6 3.g3 g6 4.Bg2 Bg7 5.0-0 0-0 6.c3 Nbd7 7.h3 Ne4 8.Ng5 Ndf6 9.Nf3

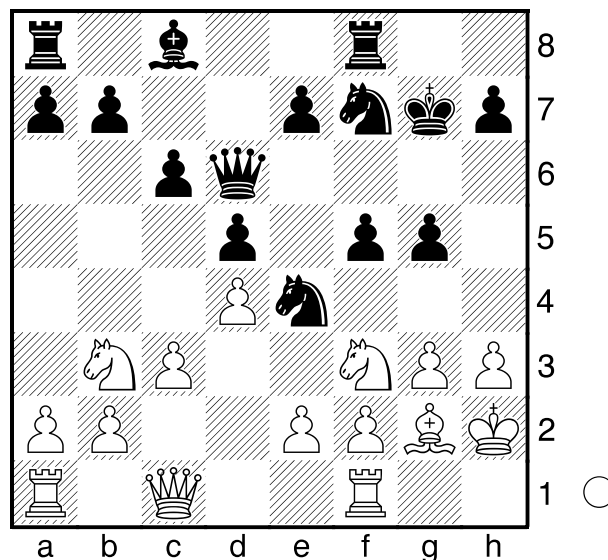
(Diagram)

**D02**  
**1893**  
**2129**



Joe hasn't played a tournament game for quite a while, and seems to be trying to find his bearings. (He will, I'm sure.)

9...c6 10.Kh2 Ne8 11.Bf4 f5 12.Qc1 N8d6 13.Bh6 Nf7 14.Bxg7 Kxg7 15.Nbd2 Qd6 16.Nb3 g5



17.Ne5? Nxe5 18.Bxe4 fxe4 19.dxe5 Qxe5 20.Qe3 Qf5 21.g4 Qf4+ 22.Qg3 b6 23.f3 exf3 24.exf3 e5 25.Rae1 Qxg3+ 26.Kxg3 Ba6 27.Rf2 Rae8 28.Nd2 Bd3 29.Re3 Bg6 30.Rfe2 Kf6 31.h4 h6 32.hxg5+ hxg5 33.b4 Re7 34.a4 Rfe8 35.Re1 Rh8 36.Nf1 c5 37.R3e2 cxb4 38.Ne3 Rd7 39.cxb4

Re8 40.Rd2 d4 41.Kg2 Rc8 42.a5  
 bxa5 43.bxa5 Rc5 44.a6 Rd6 45.Nf1  
 Rxa6 46.Ng3 Rc2 47.Ree2 Raa2  
 48.Nh5+ Kf7 49.Rxc2 Rxc2 50.Rxc2  
 Bxc2 51.Kf2 a5 52.Ke1 a4 53.Kd2  
 Bg6 54.Ng3 a3 55.Kc1 Ke6 56.Nf1  
 Kd5 57.Nd2 Kc5

0-1

**Chen, Richard**  
 **Suarez, Sebastian**  
 MI Felix German TNM: 2000+ (2.3)  
*[Winslow, Elliott]*

**B12**  
**2253**  
**1871**

1.e4 c6 2.d4 d5 3.e5 c5 4.dxc5 e6  
 5.a3 Bxc5 6.Qg4 Bf8 7.Nf3 Nc6 8.Bd3  
 Qc7 9.Bf4 Nh6 10.Qg3 Nf5 11.Bxf5  
 exf5 12.0-0 Be6 13.Nc3 a6 14.Rfd1  
 0-0-0 15.Be3 h6 16.h4 g5 17.hxg5  
 hxg5 18.Bxg5 Be7 19.Bxe7 Qxe7  
 20.Qf4 Rhg8 21.Nh2 Qf8 22.Rd3 Qg7  
 23.Rg3 Qxe5 24.Qxe5 Nxe5 25.Rxg8  
 Rxg8 26.Ne2 Kd7 27.b3 Rc8 28.Nd4  
 Ke7 29.Rd1 a5 30.a4 Kd6 31.Re1  
 Nc6 32.Nb5+ Kd7 33.Nf3 Nb4 34.c3  
 Na6 35.Nfd4 Nc7 36.f4 Nxb5 37.Nxb5  
 Ke7 38.Re3 Kf6 39.Kf2 Rc6 40.Ke2  
 Rb6 41.Kd2 Rc6 Sebbby has been under  
 five minutes and no longer keeping  
 score since move37, while Richard's  
 writing is scratches. 1-0 54.

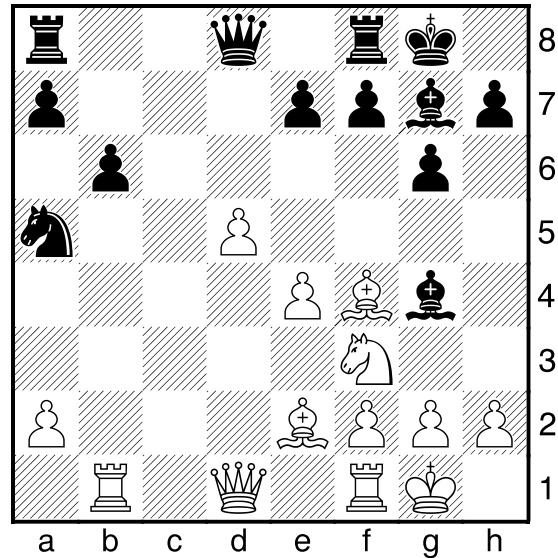
1-0

**Bambou, Christophe**  
 **Snyder, Larry**  
 MI Felix German TNM: 2000+ (2.4)  
*[Winslow, Elliott]*

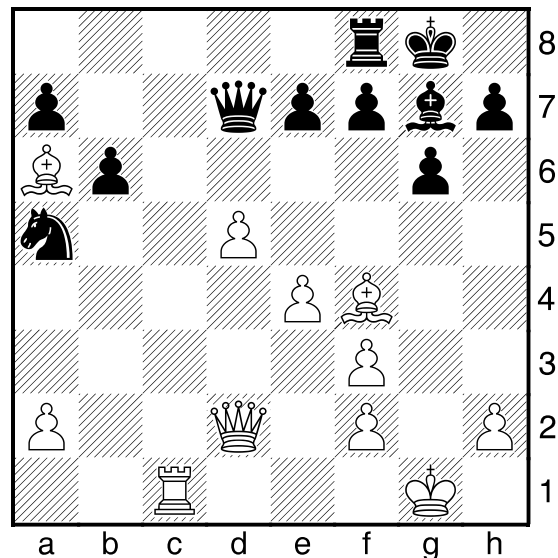
**D85**  
**2078**  
**2073**

After many perambulations in a typical Exchange Gruenfeld middlegame, longtime veteran Snyder grabs the chance to mobilize his queenside pawns

and takes the point. 1.d4 Nf6 2.Nf3 g6  
 3.c4 Bg7 4.Nc3 d5 5.cxd5 Nxd5 6.e4  
 Nxc3 7.bxc3 c5 8.Bb5+ Bd7 9.Be2  
 Nc6 10.0-0 cxd4 11.cxd4 0-0 12.Rb1  
 b6 13.d5 Na5 14.Bf4 Bg4



15.Rc1 Rc8 16.Qd2 Qd7 17.Ba6  
 Rxc1 18.Rxc1 Bxf3 19.gxf3



White has a probably winning advantage with the bishops and absolute control of the c-file, but it never crystallizes into anything further. 19...e5 20.dxe6  
 Better to keep the passed pawn, and leave Black's bishop out of the game for a while. 20...Qxe6 21.Qd5 Qf6 22.Qd6

**Qb2 23.Rc7 Qxa2 24.Bc8?!**

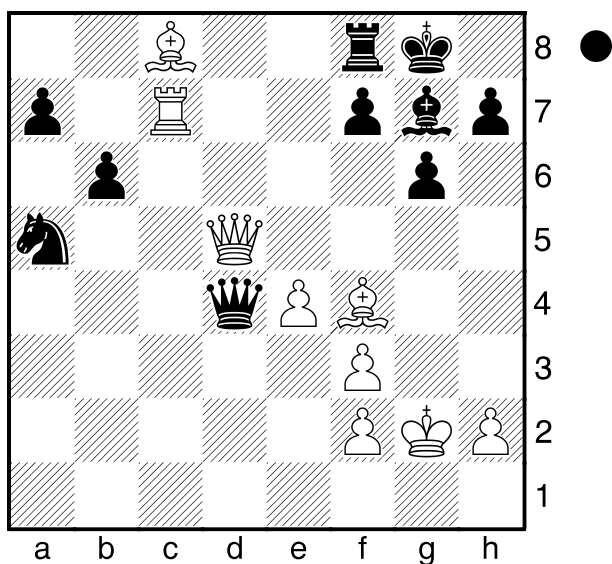
[ 24.Rxa7?! Nb3 25.Be3 Qa1+  
26.Kg2 Nd4 White has nothing. ]  
[ 24.Kg2! Qe6 25.Qxe6 fxe6 26.Bd6  
Rf7 27.Rc8+ Bf8 28.f4± is a bind  
worth a lot more than the pawn. ]

**24...Qa1+**

[ 24...b5!= 25.Kg2 ( 25.Rxa7 Rxc8  
26.Qa6 Qc4 ) 25...Nc4 26.Be6!?! fxe6  
27.Qd7 Qb2 28.Bh6 Ne3+! 29.Bxe3  
Qf6= ]

**25.Kg2 Qd4** The harassment continues

**26.Qd5**



Exchanging on his own terms **26...Qf6??**

**27.Bg5??**

[ 27.Bd6+- is crushing; note Qd8  
28.Rd7! Qxc8 29.Bxf8 Qxf8 30.Rd8 ]

**27...Qe5** Now White's just out on a limb,  
and climbing off it is a difficult process.

**28.Rc2 Nb3!** heading to a better square  
and clearing the path for the a-pawn.

**29.f4?!**

[ 29.Qxe5 Bxe5 30.f4 Nc5 ( 30...Nd4  
31.Rd2 Nb3 32.Rc2 Nc5 anyway )  
31.fxe5 Rxc8 32.Be3 a5 ]

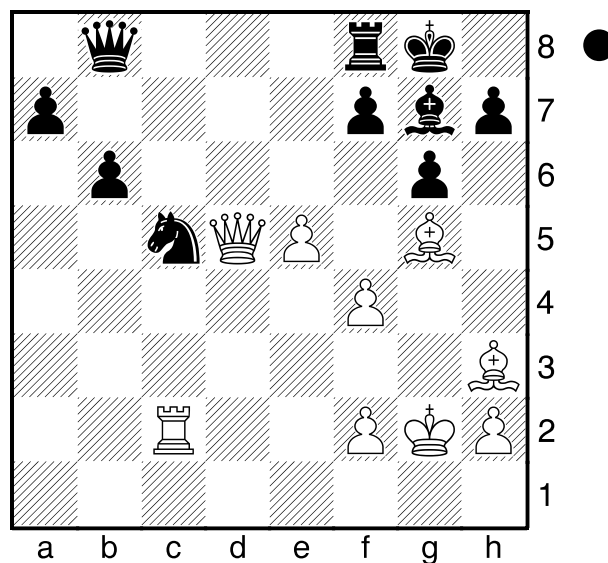
**29...Qb8?**

[ 29...Qxd5 30.exd5 Nc5 31.Bh3 f6!  
32.Bh4 Kf7 33.d6?! f5 34.Be7 Rb8  
That d-pawn is neutralized and  
eventually won, in classic Exchange

Gruenfeld fashion. ]

**30.Bh3 Nc5 31.e5?**

[ 31.Be7! Qxf4 ( 31...Re8 32.Bxc5  
bxc5 33.e5 Bf8 34.Bd7 Rd8 35.f5!  
gxf5 36.e6! makes sure both kings  
are exposed. ) 32.Bxf8 Bxf8 33.e5  
Qg5+ 34.Kf1 a5 35.Rc3 a4 36.f4  
Qh4 White is kicking up problems for  
Black's attempt to use the nominal  
material advantage. ]



**31...Qa8! 32.Rd2 a5**

[ 32...Ne6! ]

**33.Qxa8?! Rxa8+** Now Black is  
arranged nicely to get those pawns  
going! **34.Bd8 b5 35.Bb6 Ne6 36.Kf3**

**a4 37.Bf1 b4 38.Bc4 Rb8 39.Ba5 b3**

**40.Rb2 Bf8 41.Ke4 Ba3**

[ 41...a3! since the b-pawn is  
poisoned. ]

**42.Rb1 Bb4 43.f5 gxf5+ 44.Kxf5**

**Bxa5 45.Kf6 Bd8+ 46.Kf5 Nc5 47.f4**

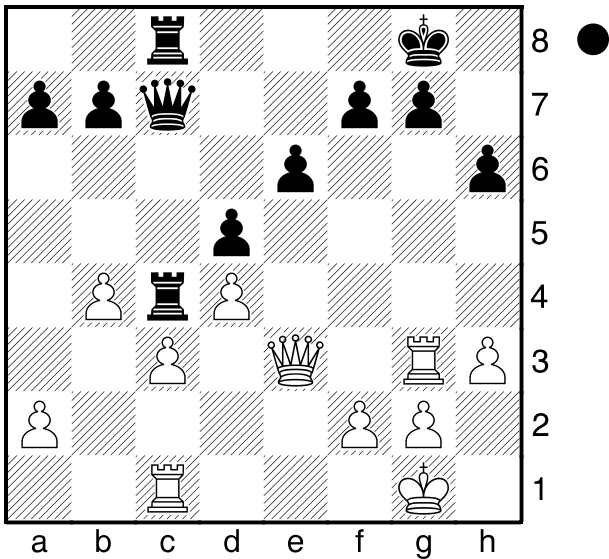
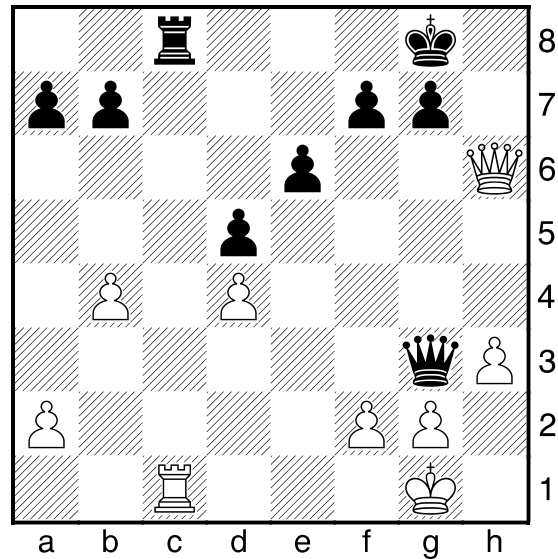
**a3 48.Rg1+ Kf8**

**0-1**

Sun, Kevin  
 Lesniewski, Lucas  
 MI Felix German TNM: 2000+ (2.5)  
*[Winslow, Elliott]*

**B13**  
**1870**  
**2007**

**1.e4 c6 2.d4 d5 3.exd5 cxd5 4.Bd3**  
**Nc6 5.c3 Nf6 6.Bf4 Bg4 7.Qb3 Qd7**  
**8.Nd2 e6 9.Ngf3 Bd6 10.Bxd6 Qxd6**  
**11.0-0 0-0 12.Rfe1 Qc7 13.Qc2 Rac8**  
**14.Rac1 Qb8 15.Qb1 Ne7 16.Ne5 Bf5**  
**17.Ndf3 h6 18.Bxf5 Nxf5 19.Qd3 Nd6**  
**20.h3 Qc7 21.b4 Nc4 22.Nxc4 Qxc4**  
**23.Qc2 Qc7 24.Ne5 Nd7 25.Nxd7**  
**Qxd7 26.Re3 Rc4 27.Rg3 Rfc8**  
**28.Qd2 Qc7 29.Qe3**  
 [ 29.a3 ]



**29...Rxb4! 30.Qxh6!?** **Qxg3! 31.cxb4**

(Diagram)

**Qb8?**

[ 31...Rc4!-+ ]

**32.Qd2?!**

[ 32.Rxc8+= ]

**32...a6?!**

[ 32...Rc4 ]

**33.Rc3?! Rc4! 34.Rg3 Qc7 35.h4**  
**Qe7 36.Qf4 Qc7**

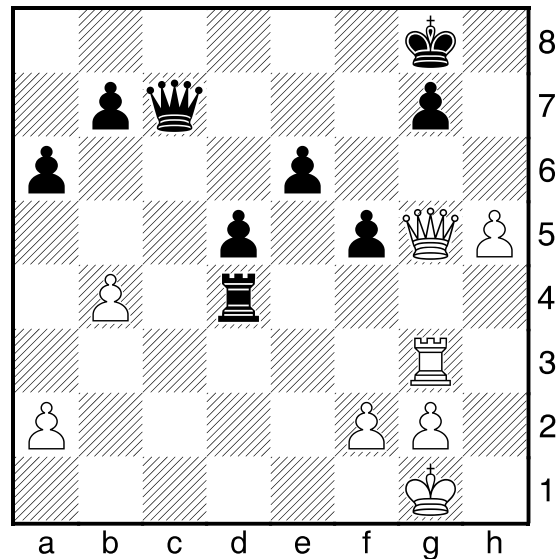
[ 36...Rxb4! ]

**37.Qg4 f5 38.Qg5 Rxd4**

[ 38...Rxb4! ]

**39.h5**

[ 39.b5! ]



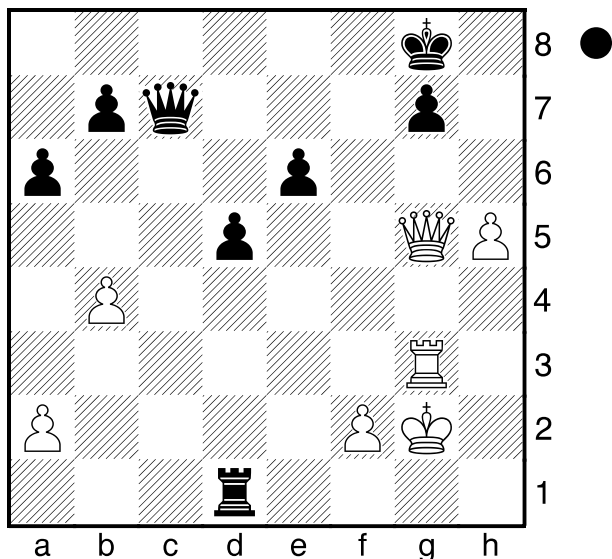
39...f4?

[ 39...Rxb4 40.h6 Rg4!± ]

40.Rg4± Rd1+ 41.Kh2 f3+ 42.Rg3  
fxg2

[ 42...Rf1!± ]

43.Kxg2



d4??

[ 43...Rc1 44.h6 Rc3 45.Rg4 Rc4 ]

44.h6+- b5 45.Qg6 Qb7+ 46.f3 Rd2+  
47.Kh3 Qf7 48.h7+  
1-0

□ Arun,Siddharth

D00

2193

■ Sawhney,Yuvraj Singh

1783

MI Felix German TNM: 2000+ (2.7)

1.d4 d5 2.Nc3 Nf6 3.Bf4 e6 4.Nb5  
Na6 5.e3 Be7 6.Nf3 0-0 7.h3 c6  
8.Nc3 c5 9.Bxa6 bxa6 10.0-0 cxd4  
11.exd4 Qb6 12.Rb1 Bb4 13.Na4 Qb5  
14.c3 Be7 15.Ne5 Nd7 16.c4 dxc4  
17.Nc3 Qb7 18.Nxc4 Nb6 19.Na5 Qd7  
20.Qf3 Qxd4 21.Rfd1 Qb4 22.Nb3  
Rd8 23.Bc7 Rf8 24.Rd4 Nc4 25.Qxa8  
Bb7 26.Qxa7 Ra8 27.Ba5 Nxa5  
28.Qxa8+ Bxa8 29.Rxb4 Bxb4  
30.Nxa5 Bxa5 31.b4 Bc7 32.b5 axb5  
33.Rxb5 Bd6 34.Ra5 Bb7 35.Ra7 Bd5

36.Nxd5 exd5 37.Rd7 Ba3 38.Rd8+  
Bf8 39.a4 f6 40.a5 Kf7 41.Rxf8+ Kxf8  
42.a6 Kf7 43.a7 d4 44.a8Q d3  
45.Qd5+ Kg6 46.Qxd3+ Kh6 47.f4 g6  
48.Qd7 f5 49.Qe7 g5 50.Qxg5#  
1-0

□ Clemens,Kristian

D58

1927

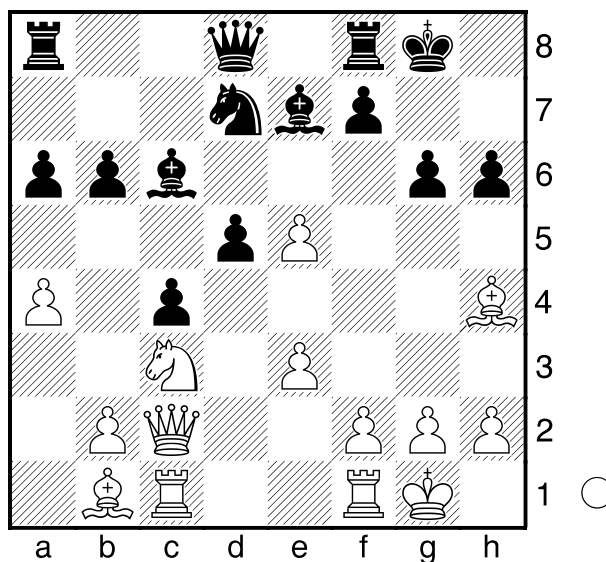
■ Kingma,Karl Stuart

1619

MI Felix German TNM: 1600-1999 (2.9)

[Winslow,Elliott]

1.Nf3 e6 2.c4 Nf6 3.d4 d5 4.Nc3 Be7  
5.Bg5 0-0 6.e3 h6 7.Bh4 b6 8.cxd5  
exd5 9.Bd3 Bb7 10.0-0 Nbd7 11.Qe2  
c5 12.Rac1 c4 13.Bb1 a6 14.a4 Bc6  
15.Qc2 g6 16.Ne5 Nxe5 17.dxe5 Nd7



18.e6 Ne5 19.Bxe7 Qxe7 20.exf7+  
Rxf7 21.Qd2

(Diagram)

B07

1900

1560

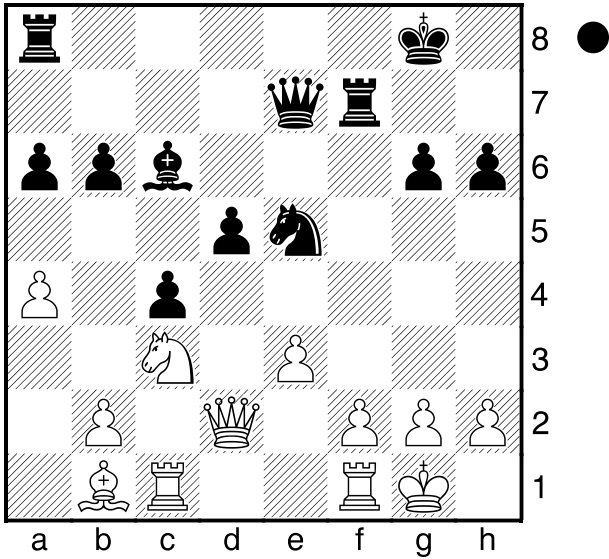
□ Dutter, Frederic

■ Chan, John

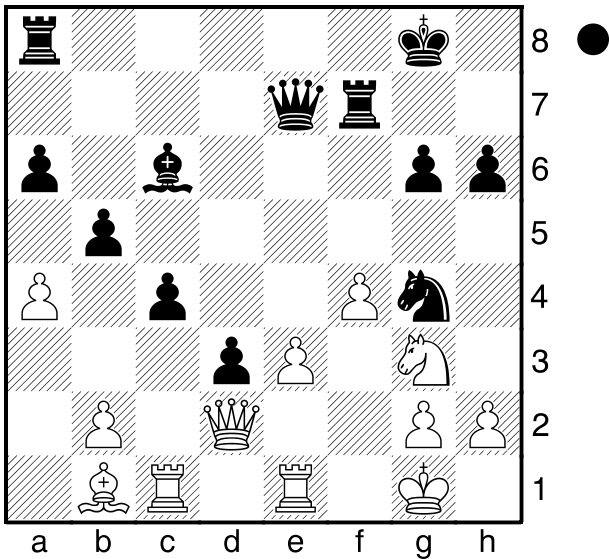
MI Felix German TNM: 1600-1999 (2.10)

[Winslow, Elliott]

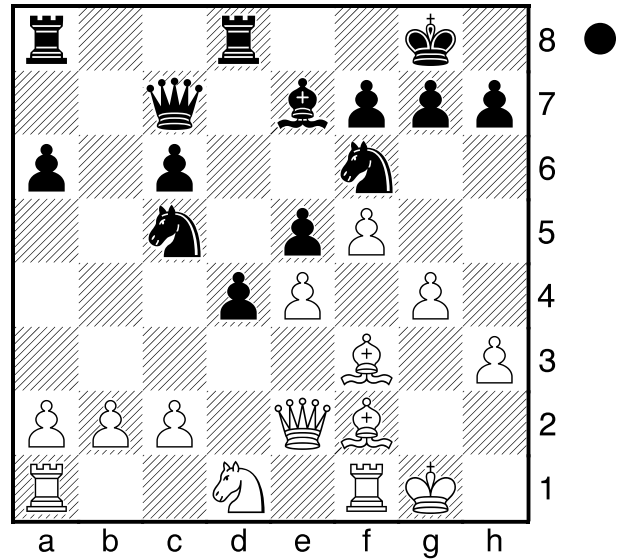
1.e4 d6 2.d4 c6 3.Nc3 Nf6 4.f4 Bg4  
5.Nf3 e6 6.h3 Bxf3 7.Qxf3 Qb6 8.Qd3  
Nbd7 9.Be3 Qc7 10.Be2 Be7 11.Bf3  
e5 12.d5 a6 13.dxc6 bxc6 14.0-0 0-0  
15.f5 Nc5 16.Qe2 d5 17.Bf2 d4  
18.Nd1 Rfd8 19.g4



d4 22.Ne4 d3 23.Ng3 b5 24.f4 Ng4  
25.Rfe1



Nxh2 26.b3 Qh4 27.Nf1 Ng4 28.Bxd3  
Rd8 29.bxc4 Rxd3 30.Qa2 b4 31.Re2  
Rf5 32.e4 Rh5 33.Ng3 Qh2+ 34.Kf1  
Qh1+  
0-1



d3 20.cxd3 Nxd3 21.Be3 h6 22.g5  
hxg5 23.Bxg5 Nf4 24.Bxf4 exf4  
25.Rc1 Qb6+ 26.Kh2 Bb4 27.Nc3 Qe3  
28.Qxe3 fxe3 29.Rfd1 Nd7 30.Kg3  
Ne5 31.Be2 Bc5 32.Nd5 Bd6 33.Nf4  
a5 34.Kg2 Rab8 35.Nd3 Nxd3  
36.Rxd3 Rxb2 37.Kf3 Rxa2 38.Rxc6  
Be7 39.Rxd8+ Bxd8 40.Rc8 Rd2  
41.Kxe3 Rd7 42.Bb5 Rd1 43.Bd3 a4  
44.Rxd8+ Kh7 45.Ra8 Ra1 46.e5 Kh6  
47.e6 fxe6 48.fxe6  
1-0

**Srinivasan,Sivavishnu** **B90**  

**Li,David Z** **1366**  
 MI Felix German TNM: 1600-1999 (2.11) **1711**  
*[Winslow,Elliott]*

**1.e4 c5 2.Nf3 d6 3.d4 cxd4 4.Nxd4 Nf6 5.Nc3 a6 6.h3 e5 7.Nde2**

There are other knight moves... **7...Be7**  
 [ 7...Be6 8.g4 d5 ( 8...h6; 8...b5 ) ]  
 [ 7...h5! ? ]

**8.Bg5!?**

[ 8.g4! has been the point since Weaver Adams came up with the "symmetric" response to 5...a6 in the 1940s; in fact it was seen in Lombardy-Fischer, US Championship 1958. If White is attacking, RJF didn't think so; he just castled here (1/2-1/2 47). ]

**8...Nbd7**

[ 8...Be6 aims for an optimal development, but White could go for one of his own with 9.Bxf6 Bxf6 10.Nd5 Still, it's nothing special; Black develops, the pawn at h3 is just a wasted move. ]

**9.Ng3 h6 10.Bxf6** Now Black has no problems.

[ 10.Be3! ? is interesting, say Nb6 11.Qf3! ? ± One thing about the Najdorf Sicilian: it leaves White to choose from a huge array of setups! ]

**10...Nxf6 11.Bc4 0-0 12.a4 Be6 13.Nd5 Rc8 14.Nxe7+**

[ 14.Nxf6+ Bxf6 15.Bxe6 fxe6 16.0-0 is certainly double-edged, with chances for both sides but leaning slightly Blackward. Bh4! ? ( 16...d5! ? ) ]

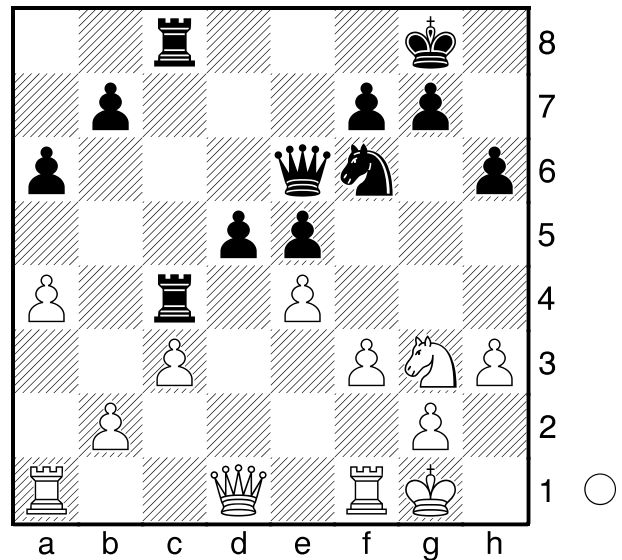
**14...Qxe7 15.Bxe6 Qxe6 16.0-0 Rc4**  
 [ 16...d5! ? ]

**17.f3** This loosening of White's pawn cover comes back to haunt him later.

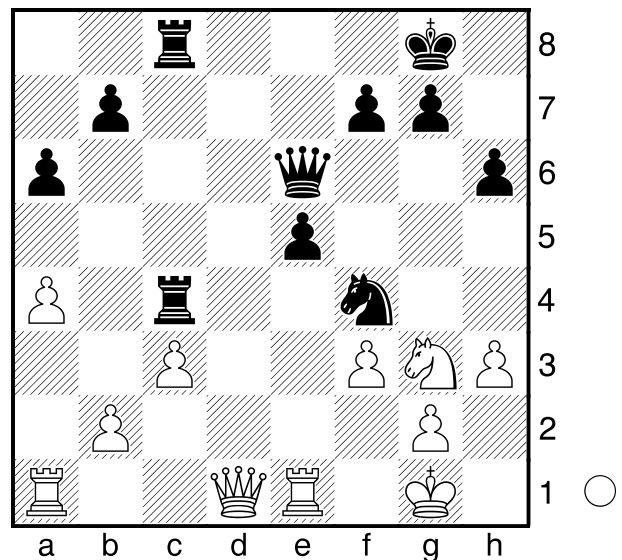
[ 17.Re1 ]  
 [ 17.Qd3 ]

**17...Rfc8**

[ 17...d5! again ]  
**18.c3 d5**



The quintessential Successful Sicilian, emerging with better center (well, only center, with that e-pawn), minority attack chances (maybe), possible peering towards the dark squares around White's king. **19.exd5 Nxd5 20.Re1 Nf4**



**21.Ne4??**

[ How the computer determines that 21.Qc2! is the only move to keep it in balance I'll never know. ]

**21...Qb6+?**

[ 21...Qg6! first! 22.g4 ( 22.Qc2 f5



woops; 22.Qd2 f5 23.Nd6 Rd8  
no better ) 22...Qb6+-+ is worlds  
better than the game! ]

**22.Kh1 Qxb2 23.Rg1!**

[ 23.Qd2 Qxd2 24.Nxd2 Rxc3  
25.Rxe5 Rc2-+ ]

**23...R8c7**

[ 23...R4c6! 24.Rb1 Qa2 25.Rxb7  
Rg6 26.Qd7 Rf8 27.Qd2 Qc4 28.a5  
f5 $\mp$  keeps up the pressure. ]

**24.Qd8+**

[ 24.Qd6! f5! 25.Qxe5 fxe4 26.Qxf4  
exf3 27.Qxf3 Qxc3 28.Qd5+ $\bar{f}$   
is going to be hard or impossible to  
win. ]

**24...Kh7 25.Qe8! f6** Now both sides  
have the same Swiss cheese for pawn  
cover!

[ 25...Nd3! 26.Rad1 Rxe4! 27.Rxd3  
Qc2!? $\mp$  (another cryptic computer  
move) has better winning chances. ]

**26.Rad1 Qb6?**

[ 26...Rxe4! 27.fxe4 Qxc3  
favors Black, best being 28.Rd8 h5  
29.Qh8+ Kg6 30.Qe8+ Kg5  
Again, a dangerous bid to win. ]

**27.Rd8?**

[ 27.Rd6! = White sets up, at the least,  
28.Nxf6+ and 29.Rd7+ with a  
perpetual. ]

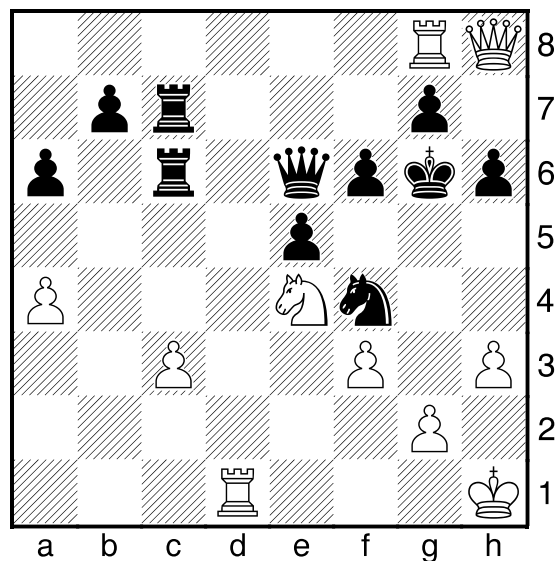
**27...Qe6! $\bar{f}$  28.Qh8+ Kg6 29.Rgd1?  
R4c6?**

[ 29...Rxe4!! 30.fxe4 Nxf3!!-+  
The point of the preliminary exchange  
sac is 31.Re8 Qg4 ]

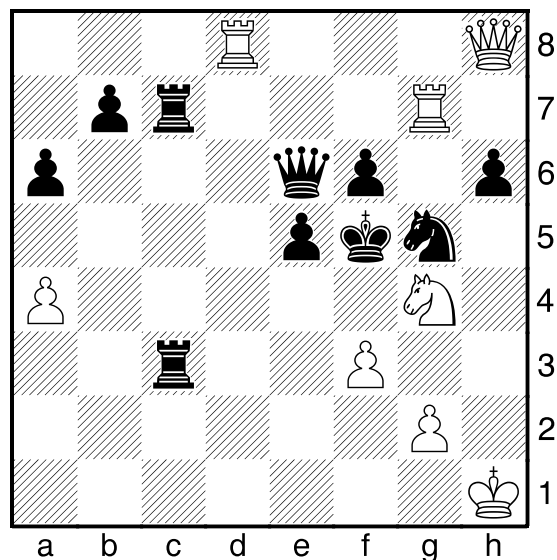
**30.Rg8**

[ 30.h4! = says Stockfish 15... Rc8  
31.g4 Rxd8 32.Rxd8 h5 33.Ng3  
hxg4 34.Re8 Qd7 35.Rd8 Qc7?  
36.Rg8+- ]

(Diagram)



**30...Nxf3 31.Rdd8 Ng5 32.Nf2 Rxc3  
33.Ng4 Kf5 34.Rxg7**

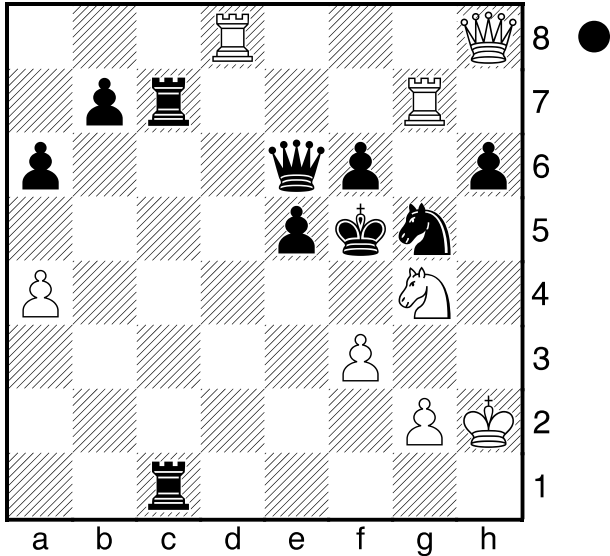


**Rc1+** Perhaps Black thought his  
combination was winning, but White  
finds a precarious route to a perpetual.

[ Black did have his own path to a win:  
34...Rxg7 35.Qxg7 e4!! Crazy as it  
seems, there just isn't a win for White.  
Meanwhile Black reduces White's  
king protection, not to mention other  
avenues. For example 36.Re8  
( 36.Rd5+ Kf4! Cozy.; 36.Rd1 exf3  
37.gxf3 Qc6 38.Nh2 Rxf3  
So much for desperate defence. )

36...Rc1+ 37.Kh2 Qd6+ Ouch!  
 38.Ne5 Nxf3+! 39.gxf3 Qd2+ 40.Qg2  
 Qxg2+ 41.Kxg2 fxe5 and a winning  
 rook ending! ]

**35.Kh2**



**Nxf3+! 36.gxf3**

[ 36.Kg3!? Rxc7 37.Qxc7 Ng5  
 38.Nxh6+ Ke4 is another wild ride,  
 with a perpetual the best result:  
 39.Qxb7+ ( 39.Qg6+?! (Any other  
 tries just lose) f5 40.Qxc7 Rh1  
 41.Qxf5+ (Or knight first -- again,  
 other tries succeed -- in giving Black  
 the point.) ) 39...Qc6 40.Qb4+ Qc4  
 ( 40...Rc4?? 41.Qe1# ) 41.Qb6  
 Qc6= ]

**36...Qa2+ 37.Kh3 Rh1+ 38.Kg3 Rg1+  
 39.Kh4**

[ 39.Kh3?? ]

**39...Rh1+ 40.Kg3** Fantastic all-in play  
 by both players!

1/2-1/2

**B12**

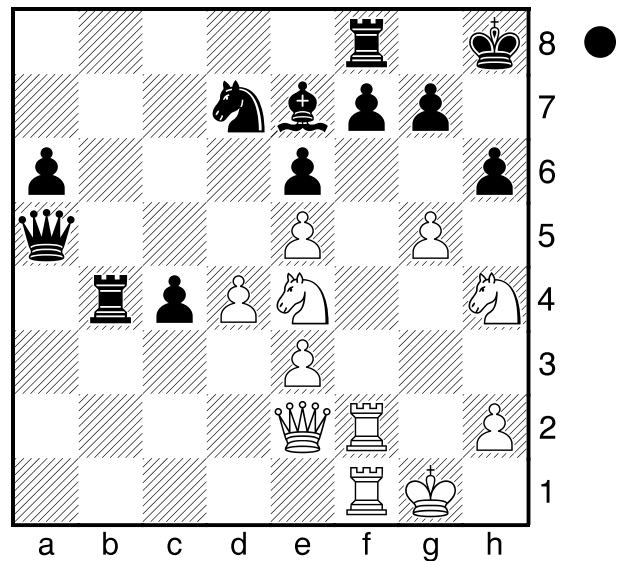
□ **Briancon-Marjollet, Victor** 1627

■ **Moisselin, Simon** 1491

MI Felix German TNM: 1600-1999 (2.12)

[Winslow, Elliott]

1.e4 c6 2.d4 d5 3.e5 Bf5 4.Nf3 e6  
 5.Bd3 Bxd3 6.Qxd3 Nd7 7.0-0 Ne7  
 8.Bg5 Qb6 9.Nbd2 c5 10.c3 c4  
 11.Qc2 h6 12.Be3 Nf5 13.Rab1 Qc6  
 14.a4 a6 15.b3 b5 16.bxc4 dxc4  
 17.a5 Be7 18.g4 Nxe3 19.fxe3 Rb8  
 20.Ne4 0-0 21.g5 Kh8 22.Rf2 b4  
 23.cxb4 Rxb4 24.Rbf1 Qa4 25.Qe2  
 Qxa5 26.Nh4



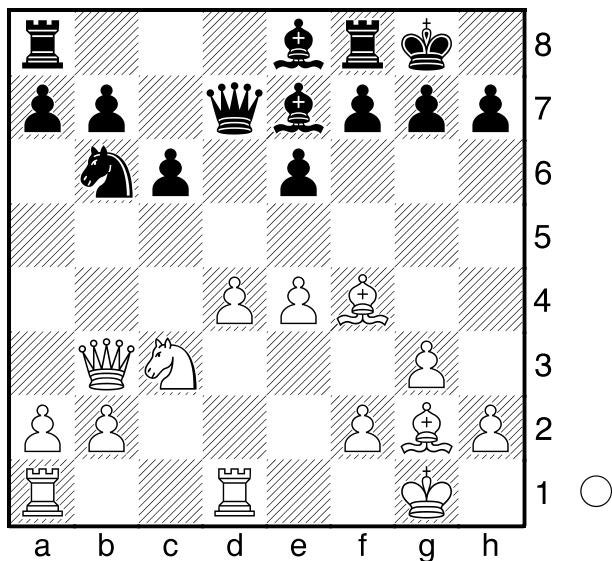
Nxe5 27.gxh6 Bxh4 28.hxg7+ Kxg7  
 29.dxe5 Bxf2+ 30.Kxf2 Qxe5 31.Qg4+  
 Kh6 32.Qh4+ Qh5 33.Qf4+ Kg7  
 34.Rg1+ Qg6 35.Qe5+ f6 36.Rxc6+  
 Kxc6 37.Qxe6 Rbb8 38.Qxa6 Rbc8  
 39.Nd6 Rb8 40.Qxc4 f5 41.Qf4 Rb2+  
 42.Kf3 Rb1 (it says "42...Re1") 43.h4  
 Rd1 44.Qg5+ Kh7 45.h5 Rf1+ 46.Ke2  
 Rg8 47.Qe7+ Rg7 48.Qe5 [...]

**1-0**

**Stevens, Adam Benjamin** **E07**  
**1749**  

**Powers, Christopher** **1704**  
 MI Felix German TNM: 1600-1999 (2.13)  
*[Winslow, Elliott]*

1.d4 d5 2.c4 e6 3.Nf3 Nf6 4.g3 Be7  
 5.Bg2 0-0 6.0-0 Nbd7 7.Nc3 c6 8.Bf4  
 dxc4 9.e4 Nb6 10.Qe2 Bd7 11.Ne5  
 Be8 12.Rfd1 Nfd7 13.Nxc4 Nxc4  
 14.Qxc4 Nb6 15.Qb3 Qd7



16.d5 Rd8 17.Bh3 cxd5 18.exd5 Bf6  
 19.dxe6 Qe7 20.Rxd8 Qxd8 21.Rd1  
 Qa8 22.Bd6 Bc6 23.Bxf8 Kxf8  
 24.Qb4+ Be7 25.Qf4 f6 26.Bg2 Be8  
 27.Qe4 Qc8 28.Qxh7 Qxe6 29.Qh8+  
 Kf7 30.Bf3 Bf8 31.Bh5+ Ke7 32.Bxe8  
 Kxe8 33.Qh5+ Ke7 34.Nd5+ Nxd5  
 35.Qxd5 Qe2 36.Qd7#  
**1-0**

**Parsons, Stephen** **A18**  
**1749**  

**Rakonitz, David** **1662**  
 MI Felix German TNM: 1600-1999 (2.14)

**1.c4 Nf6 2.Nc3 e6 3.e4 d6 4.d4**  
**Nc6?** Already this is a bit of a mistake as  
 c5 is the logical break. White has a ton

of space and great squares for his  
 pieces. **5.Nf3 Be7 6.h3** A quiet move  
 the restricts more light squares on the  
 king side should e5 appear on the board  
 from black. **6...0-0 7.Bd3 e5 8.Be3**  
 d5 is most likely better here. **8...exd4**  
**9.Nxd4 Ne5 10.Be2 Re8 11.0-0 c5**  
**12.Nc2 Be6 13.b3 a6 14.Qd2 Qc7**  
**15.Rac1 Qc6??** An unfortunate blunder  
 that loses a piece. **16.f4!** White has  
 been waiting for the right moment to  
 execute this move and was rewarded for  
 his patience. **16...Nxc4 17.bxc4 Nxe4**  
**18.Nxe4 Qxe4 19.Bd3 Qc6**  
 But it is not immediately obvious how to  
 win and white must tread carefully **20.f5**  
**Bd7 21.Bg5?** Attempting to remove the  
 threat of Bf6 and get the queen into the  
 kingside asap.

[The computer gives the following line;  
 f6 is the most tempting move but was  
 hard to justify when you're already up  
 material. 21.f6 Bxf6 22.Rxf6 gxf6  
 23.Bh6 Kh8 24.Ne3 d5 25.cxd5  
 Qd6 26.Qf2 ]

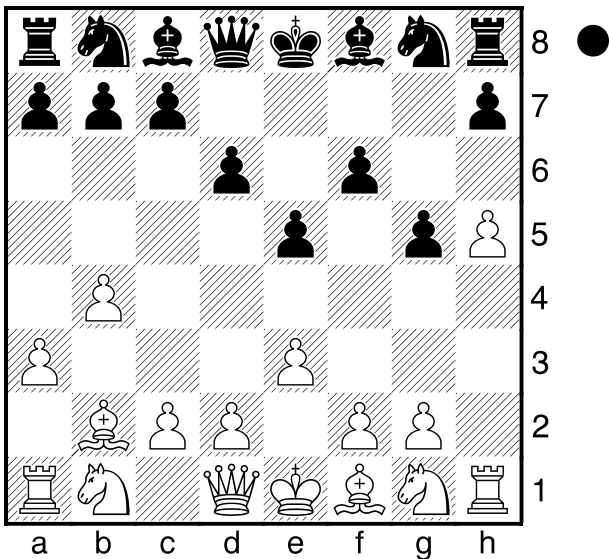
**21...Bxg5 22.Qxg5 h6 23.Qf4 f6**  
**24.Ne3 Re5 25.Ng4 Re7 26.Rcd1**  
**Rd8 27.Bc2** A dull move **27...Be8**  
 Met with a great reply **28.Qg3 Kf8**  
**29.Rd2 Bf7 30.Bb3 b5 31.cxb5 axb5**  
**32.Bxf7 Kxf7???** The second  
 unfortunate blunder; Rxf7 gives black  
 some better tries as he has a nice pawn  
 mass on the queenside that white has to  
 deal with. **33.Nxh6+!** This knight is  
 blocking it's teammate on the g file and  
 giving back the material allows the  
 queen to enter the game and expose the  
 black king. Other moves are too slow  
 and the black pawns will run. **33...gxh6**  
 Declining the sacrifice is the only way to  
 survive. **34.Qg6+ Kf8 35.Qxf6+ Ke8**  
**36.Rfd1 Qe4?? 37.Qh8+!** < br / > < br /  
 > Game may have continued...

[ 37.Qh8+ Kf7 38.Qxd8 Qe3+  
 39.Kh1 Qg3 40.Rf1 Re8 41.Qd7+

10.04 ]  
1-0

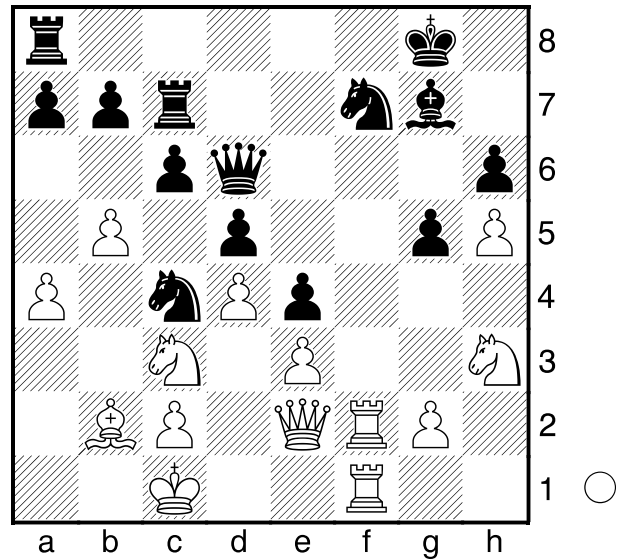
**Macnee, Felix** **A00**  
**1651**  
 **Sanguinetti, George A** **1900**  
 MI Felix German TNM: 1600-1999 (2.15)  
*[Winslow, Elliott]*

1.b4 g6 2.Bb2 f6 3.h4 e5 4.a3 d6  
5.h5 g5 6.e3



**Be6 7.Bd3 Nd7 8.Nc3 Qe7 9.Qf3 c6**  
**10.b5 d5 11.Bf5 Nh6 12.Bxe6 Qxe6**  
**13.0-0-0 Bg7 14.d4 e4 15.Qe2 0-0**  
**16.f3 f5 17.Nh3 Nf7 18.fxe4 fxe4**  
**19.Rdf1 h6 20.a4 Nb6 21.Ba3 Rfc8**  
**22.Rf2 Nc4 23.Bb2 Rc7 24.Rhf1 Qd6**

(Diagram)

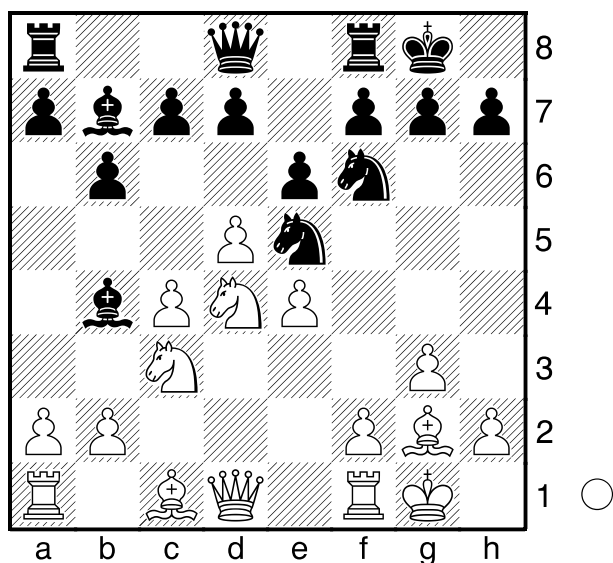


**25.Nxe4 Qb4 26.c3 Qxa4**  
 [ 26...Qxb2+ 27.Qxb2 Nxb2-+ ]  
**27.Nc5 Qxb5 28.Ne6 Re7 29.Nxg7**  
**Kxg7 30.Qf3 Rg8 31.Qf6+ Kf8**  
**32.Qxh6+ Ke8 33.Qh7 Rf8 34.Qf5**  
**Kd8 35.Nxg5 Ncd6 36.Ne6+ Kc8**  
**37.Qh3 Rg8 38.Ng5+ Kb8 39.Nxf7**  
**Nc4 40.Qh2+**  
**1-0**

**Admassu, Yonathan** **E16**  
**1680**  
 **Lin, Aung Tun** **1641**  
 MI Felix German TNM: 1600-1999 (2.16)  
*[Winslow, Elliott]*

**1.d4 Nf6 2.c4 e6 3.Nf3 b6 4.g3 Bb7**  
**5.Bg2 Nc6?!**  
 [ 5...Be7 ]  
 [ 5...Bb4+ ]  
**6.0-0 Ne7?! 7.Nc3 Ng6 8.d5**  
 [ 8.a3 ]  
**8...Bb4 9.Nd4**  
 [ 9.Bd2 ]  
**9...0-0**  
 [ 9...Bxc3 ]  
**10.e4**  
 [ 10.Bd2± ]  
**10...Ne5?!**

[ 10...Bxc3 11.bxc3 e5= ]



**11.f4?**

[ 11.Qb3± ]

[ 11.Na4!± ]

**11...Nxc4 12.e5?**

[ 12.Qb3 Bxc3 13.Qxc3 Na5 14.b4 c5= ]

**12...Bxc3 13.exf6**

[ 13.bxc3 Nxd5 14.Qe2 c5 15.Qxc4 cxd4 16.Qxd4 Qc7± ]

**13...Nxb2+ 14.Bxb2 Bxb2 15.dxe6**

**Qxf6 16.Bxb7 Bxd4+ 17.Kh1 Rab8**

**18.exf7+ Kh8**

**0-1**

□ **Hule,Pratyush**

**C02**

**1268**

■ **Cooper, Lee**

**1590**

MI Felix German TNM: Under 1600 (2.16)

1.e4 e6 2.d4 d5 3.e5 c5 4.c3 Bd7  
5.Nf3 Nc6 6.Be3 Qb6 7.Qb3 Qxb3  
8.axb3 cxd4 9.Nxd4 Nxe5 10.Nb5  
Bxb5 11.Bxb5+ Nc6 12.Rxa7 Rxa7  
13.Bxa7 Bd6 14.Bd4 e5 15.Be3 Nge7  
16.0-0 0-0 17.Nd2 f5 18.f4 Ng6 19.g3  
exf4 20.Bxf4 Nxf4 21.gxf4 Nd8 22.c4  
d4 23.Nf3 Bxf4 24.Kg2 Be3 25.Ne1

Ne6 26.Nd3 g5 27.Kg3 h5 28.c5 f4+  
29.Kg2 g4 30.Bc4 f3+ 31.Kg3 Rf6  
32.b4 Kg7 33.b5 Bf4+ 34.Nxf4 Nxf4  
35.Rd1 d3 36.Kf2 Rf5 37.Bxd3 Nh3+  
38.Kg3 Rxc5 39.Bf1 Rxb5?? 40.Bxb5  
**1-0**

**C02**

**999**

□ **Hollon,Nick**

■ **Toledo Guerrero,Fernando**

**1547**

MI Felix German TNM: Under 1600 (2.17)

1.e4 e6 2.d4 d5 3.e5 c5 4.Nf3 cxd4  
5.Nxd4 Nc6 6.Bb5 Nge7 7.0-0 Bd7  
8.Re1 Qc7 9.Nf3 Ng6 10.Qe2 Rc8  
11.Bxc6 Bxc6 12.Nc3 a6 13.Bd2 Bc5  
14.a4 0-0 15.b4 Bxb4 16.Nxd5 Bxd5  
17.Bxb4 Bxf3 18.gxf3 Rfd8 19.Qe4  
Qxc2 20.Qxc2 Rxc2 21.Red1 Rdc8  
22.Bd6 Nh4 23.f4 R2c4 24.Rdb1 b5  
25.axb5 axb5 26.h3 Rxf4 27.Rxb5 Rf3  
28.Ra3 Rc1+ 29.Kh2 Rxf2+ 30.Kg3  
Rg2+ 31.Kxh4 Rc4+ 32.Kh5 g6+  
33.Kh6 Rh4#

**0-1**

**E97**

□ **Sullivan,George T**

**916**

■ **Gu,Chunhui**

**1483**

MI Felix German TNM: Under 1600 (2.18)

[Winslow,Elliott]

**1.d4 Nf6 2.c4 g6 3.Nf3 Bg7 4.Nc3**

**0-0 5.e4 d6 6.Be2 Nc6**

[ 6...e5 ]

[ 6...Nbd7 ]

**7.0-0 e5 8.d5 Ne7 9.Bg5**

[ 9.Ne1 ]

[ 9.Nd2 ]

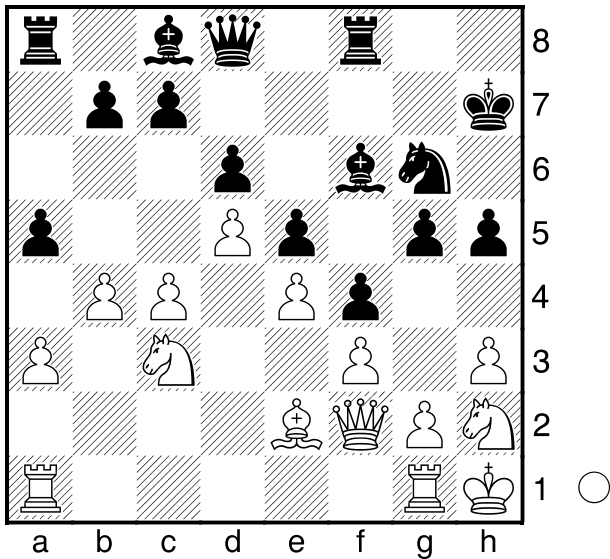
[ 9.b4 ]

**9...h6 10.Bxf6 Bxf6 11.h3 Bg7**

**12.Nh2 f5 13.f3 f4 14.Kh1 g5 15.Rg1**

**Ng6 16.Qe1 Kh7 17.b4 a5 18.a3 h5**

**19.Qf2 Bf6**

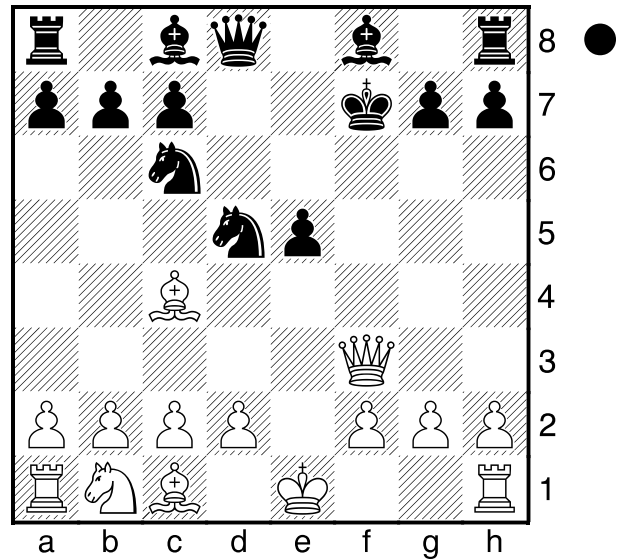


20.g4 fxc3 21.Qxc3 Nf4 22.Bf1 axb4  
 23.Nb1 h4 24.Qe1 Bxh3 25.Bxh3  
 Nxh3 26.Rg2 Nf4 27.Rd2 Qd7  
 28.Ng4 Kg6 29.Raa2 bxa3 30.Nxa3  
 Qa4 31.Qf1 Qa7 32.Nb5 Qc5  
 33.Rab2 Ra4 34.Rbc2 Rfa8 35.Rc3  
 Be7 36.Rdc2 Ra1 37.Rc1 Rxc1  
 38.Qxc1 Ne2 39.Qxcg5+ Bxcg5  
 0-1

Tam, Brent C57  
 Blum, Paul 1480  
 MI Felix German TNM: Under 1600 (2.19) 1092  
*[Winslow, Elliott]*

1.e4 e5 2.Nf3 Nc6 3.Bc4 Nf6 4.Ng5  
 d5 5.exd5 Nxd5 6.Nxf7 The dreaded  
 (or well-loved) Fried Liver Attack. After  
 hundreds of years of confusion, the  
 computers are finally declaring it Plus  
 White. 6...Kxf7 7.Qf3+

(Diagram)



**Kg6??** This caves in.

[The only move to keep it interesting is  
 7...Ke6 8.Nc3

**A) 8...Nce7?** 9.d4 c6 10.dxe5!

It turns out there was no need for 9./  
 10.Qe4. Kxe5? (10...b5 11.Bb3)  
 11.Bg5 Kd6 12.0-0-0 Black is up a  
 piece. Stockfish 15 makes it PLUS  
 TEN. Hey, that alone makes this  
 worth seeing!

**B) 8...Ncb4!** 9.Bb3 (or even  
 9.0-0!? c6 10.d4) 9...c6 10.a3  
 Na6 (10...Qf6 11.Qxf6+ gxf6  
 12.axb4 Bxb4±) 11.Nxd5 cxd5  
 12.d4± ]

**8.Bxd5+- Bf5 9.d3**

[ 9.g4! ]

**9...Nd4**

[ 9...h5 ]

**10.Qg3+ Kh5 11.Qxe5?!**

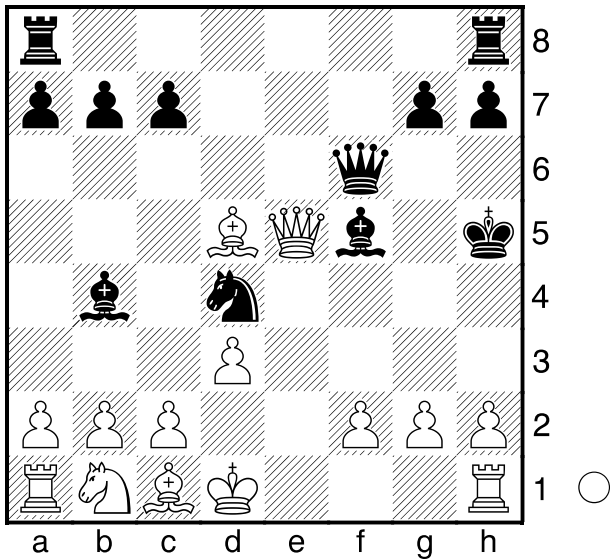
[ 11.c3! ]

**11...Bb4+?**

[ 11...Qe7 12.Qxe7 Bxe7 13.Kd1+- ]

**12.Kd1 Qf6**

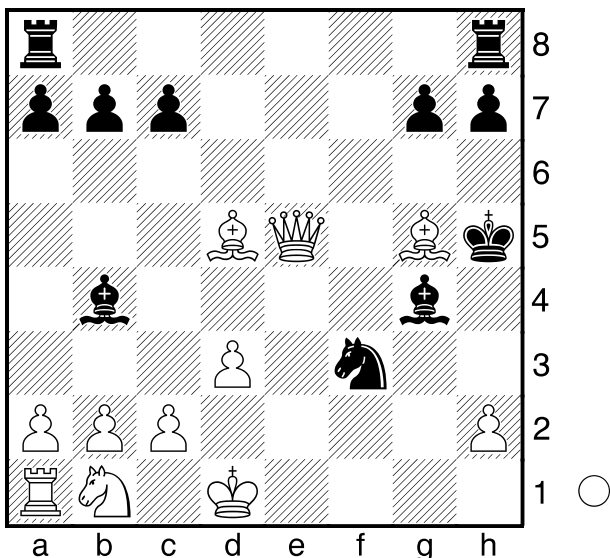
(Diagram)



**13.g4+! Kxg4 14.Rg1+ Kh5 15.Rg5+?**

[ 15.Bf7+! g6 ( 15...Qxf7 16.Qf4!  
and mate in three or so. ) 16.Qxf6  
is also mate in a few. The nicest line is  
Be7 17.Rg5+ Kh4 18.Qxd4+ Kh3  
19.Qe3+ Kxh2 20.Qg3+ Kh1  
21.Qg1# ]

**15...Qxg5 16.Bxg5 Bg4+ 17.f3 Nxf3**



**18.Bf7+??** Here Paul resigned. In fact  
he's totally winning.

[ 18.Bf7+?? g6 , White must move  
queen, B/g5 goes with check, the  
rooks hit the central files f8 and e8,  
White doesn't survive. ]

[ 18.Bxf3! Bxf3+ 19.Kc1 is all big  
numbers (plus ten again!) Bd6  
( 19...h6 20.Be7+ g5 21.Bxb4 )  
20.Qxg7 Rhg8 (or 20...Rag8; 20...h6  
21.Be3 ) 21.Qh6+ Kg4 22.Qh4+ Kf5  
23.Nd2 ]

**1-0**

**D04**

□ Hilliard, Michael R **1400**  
■ Cadimas, Freddie Llanes **898**  
MI Felix German TNM: Under 1600 (2.20)  
[Winslow, Elliott]

**1.d4 Nf6 2.Nf3 d5 3.e3 Bf5 4.Bd3 e6**  
**5.Bxf5 exf5 6.Nbd2 g6 7.b3 Bg7**  
**8.Bb2 0-0 9.0-0 b6 10.Ne5 Ne4 11.f3**  
**Nxd2 12.Qxd2 Re8 13.f4 Bxe5**  
**14.dxe5 c5 15.Rfd1 Re7 16.c4 Na6**  
**17.cxd5 f6 18.d6 Re6 19.Qd5 Kf7**  
**20.exf6 Rc8 21.Be5 Nb4 22.Qb7+**  
**Kf8 23.Qg7+ Ke8 24.d7+ Qxd7**  
**25.Qxd7+**

[ 25.Qg8# ]

**25...Kf8 26.Qxc8+ Kf7 27.Rd7+ Re7**  
**28.Rxe7#**

**1-0**

**B50**

□ Warda, Daniel  
■ Brown, Scott James  
MI Felix German TNM: Under 1600 (2.21)

**1.e4 c5 2.Nf3 d6 3.c3 Nf6 4.Bc4 a6**  
**5.0-0 b5 6.Bd5 Nxd5 7.exd5 Bb7 8.c4**  
**bxc4 9.Qa4+ Qd7 10.Qxc4 Qb5 11.b3**  
**Nd7 12.Re1 Nb6 13.Qxb5+ axb5**  
**14.Nc3 b4 15.Nb5 Nxd5 16.d4 Bc6**  
**17.dxc5 Bxb5 18.cxd6 e6 19.Nd4 Bd7**  
**20.Nf5 Ra6 21.Bb2 f6 22.Rad1 Kf7**  
**23.Ne3 Nxe3 24.Rxe3 e5 25.Rc1**  
**Bxd6 26.Ra1 Bf5 27.Rf3 Ke6 28.Re3**  
**Rha8 29.Rae1 Rxa2 30.Bd4 Rd2**  
**31.Bb6 Raa2 32.Rg3 g6 33.Be3 Rd3**

34.Rb1 Rxb3

0-1

□ Clark,Drew H

B12

1288

■ Karpe,Ummon

769

MI Felix German TNM: Under 1600 (2.22)

1.e4 c6 2.d4 d5 3.e5 c5 4.Nf3 Bg4  
5.Be3 cxd4 6.Bxd4 e6 7.h3 Bxf3  
8.Qxf3 Nc6 9.c3 Nge7 10.Bd3 Qc7  
11.Qf4 Nxd4 12.cxd4 Nc6 13.Nc3 Qb6  
14.Bb5 Bb4 15.Ba4 0-0 16.Rd1 Qa5  
17.Bb3 Bxc3+ 18.bxc3 Qxc3+ 19.Ke2  
Rac8 20.Rhe1 a5 21.Kf1 a4 22.Re3  
Qa5 23.Bc2 Nxd4 24.Bxh7+ Kxh7  
25.Qxd4 Rc4 26.Qd3+ Kg8 27.Rg3  
Rfc8 28.Kg1 Rc3 29.Qd2 R8c5  
30.Rg4 R5c4 31.Rg5 Qc5 32.Rxg7+  
Kxg7 33.Qg5+ Kf8 34.Qd8+ Kg7  
1/2-1/2

□ Albuquerk,Eli

B15

1231

■ Tam,Hoa Long

1465

MI Felix German TNM: Under 1600 (2.24)

[Tam, Hoa Long]

1.e4 c6 2.Nc3 d5 3.d4 dxe4 4.Nxe4  
Nf6 5.Nxf6+ exf6 6.Nf3 Bd6 7.Qe2+  
Be7 8.Bf4 0-0 9.Qd2 Be6 10.Bd3  
Re8 11.0-0 Nd7 12.c4 Nb6 13.Qc2  
g6 14.Rfd1 Rc8 15.h4 Bg4 16.Rd2?!  
[ 16.Be2 ]  
16...Bxf3 17.gxf3 Qxd4 18.Be4  
[ 18.Bxg6 Qxf4 ]  
[ 18.Bg3 Rcd8 ]  
18...Qxc4 19.Qxc4 Nxc4 20.Rd7 b5  
21.b3 Ne5 22.Bxe5 fxe5 23.h5  
I guess my opponent didn't like Rxa7  
Bxh4, but I think that would have  
misplaced my bishop and given white  
time to bring his other rook into the game  
23...Bc5?

[ 23...f5 this would have kept white's  
bishop of the g8-f4 diagonal,  
preventing the problems I had on f7  
later on, and if Bc2 (where else?) then  
Rc1 isn't possible anymore either  
24.Bc2 Bc5 ]

24.hxg6 hxg6 25.Rc1 Bd4 26.Rxc6  
Rxc6 27.Bxc6 Rb8 28.Bd5 Rf8  
29.Rb7 a6 30.Rd7 g5?! I had intended  
to meet Rd6 with a5 to at least misplace  
white's rook if he tries to hunt the pawn  
down. However, I should have played  
Kg7 first because now Rd6 forks my a6  
pawn and Rg6+. 31.Rd6 Kg7 32.Rxa6  
Rc8 33.Rc6 Trading rooks should  
greatly increase the odds of a draw, but  
I was down a significant amount of time  
on the clock and also felt that if I  
declined the trade, my rook would be  
forced to be very passive defending f7  
and I didn't see a straightforward way to  
unwind on the kingside. 33...Rxc6  
34.Bxc6 b4 35.Be4 Kf6 36.Kg2 Ke6  
37.Kg3 f6 38.Bd3 Kd6?! I think this is  
the wrong move order. I should have  
played Bb6 immediately so I can play  
Kd5-Kd4 while white's king is still far  
away. In the game, trying this same  
maneuver would be met with white's king  
on d2 and no clear way to make  
progress 39.Kg2 Bb6 40.Kf1 Bd4  
41.Bf5 Bc3 42.Ke2 Kc5 43.Kd3 Kd5  
44.Ke3 I want to keep white's king tied  
down to f2, but I also need to keep the  
d4 square available for my king to  
infiltrate. Be1 doesn't work because of  
Ke2, so I decided to have my bishop  
take the scenic route to g1 44...Bb2  
45.Kd3 Bc1 46.Be4+ Kc5 Maybe Ke6  
would have been better here, preventing  
white's bishop from returning to f5 and  
preparing f6-f5 myself or perhaps Kf5-f4  
if white's bishop leaves the h1-a8  
diagonal. 47.Bf5 Bf4 48.Ke4 Bh2  
49.Be6 Kd6 50.Bc8 Bg1 51.Ke3 Kc5  
52.Bf5 Kd5 I considered sacking the



bishop here and running to a2 and trying to deflect the bishop f5, but I'm one tempo too short for that to work **53.f4!?** I was down over half an hour on the clock at this point. I'm not losing a pawn thanks to Bh2, but I felt that that was almost certainly a draw. I knew that with two connected pawns I could force white to eventually sac back his bishop and figured that with three I could force a bishop sac and then either promote the remaining pawn or distract white long enough to run over to the queenside. However, I did not adequately calculate white's a4 ideas. **53...exf4+**

[ 53...Bh2 54.fxg5 Bf4+ ]

[ 53...gxf4+ might have given me a faster attack in the center, since I wouldn't have had to walk my king over to the h file. ]

**54.Kf3 Ke5 55.Bc8 f5**

[ 55...Kd4 56.Kg2 Bxf2 57.Kxf2 Kc3 58.Kf3 Kb2 59.Kg4 Kxa2 60.Be6 f5+ 61.Kxf5 f3= ]

**56.Kg2 Bxf2 57.Kxf2 g4 58.Ba6 Kf6**

**59.Bd3 Kg5 60.Bc4 f3 61.Kg3 f4+**

**62.Kf2 Kh4 63.a4??** this might have worked a few moves ago before my king reached h4, but now white's bishop can't participate on the kingside while watching my a pawn, and white's b pawn is too slow

[ 63.Be6= this defangs Kh3 by pinning the g pawn and prevents Kh2 ]

**63...bxa3 64.b4 Kh3 65.Bf1+ Kh2**

**66.Bc4 g3+ 67.Kxf3 g2 68.b5 g1Q**

**69.b6 Qxb6 70.Kxf4 Qd4+ 71.Kf3**

**Qxc4 72.Ke3 Kg3 73.Kd2 Qb3**

**74.Kc1 Qa2 75.Kd1 Kf3 76.Kc1 Ke3**

**77.Kd1 Qd2#**

**0-1**

**C57**  
**1413**  
**1221**

**Horde,Nicolas T**  
 **Brickhouse,Christian**  
MI Felix German TNM: Under 1600 (2.25)  
*[Horde,Nicolas]*

**1.e4 e5 2.Nf3 Nc6 3.Bc4 Nf6 4.Ng5**

**d5 5.exd5 Ng4??** I am not a theory expert but I knew this was a blunder, I spent a lot of time calculating Qf3 and the sac on f7. It's obvious Nxf7 does not work because the idea is Qf3 in the normal fried liver where the queen forks the king on f7 and the knight that's supposed to be on d5. **6.Nxf7??**

[ 6.Qf3! The killer move, White is winning as there's too many threats (Nc6, the discovered attack on f7, etc... ). This was my second choice but I decided to go fancy with 6.Nxf7 which immediately backfired Qxg5 7.dxc6 Rb8 ( 7...Be6 8.Bxe6 fxe6 9.cxb7 Rb8 10.Qc6+ Kf7 I told Cristian in our post-mortem I had this in mind as well, sometimes I really hallucinate )

8.Qxf7+ Kd8 This was my second plan, still scratching my head on why I did not play 6.Qf3 ]

[ 6.dxc6 Qxg5 7.Qf3 Transposing ]

**6...Qf6**

[ 6...Kxf7?? 7.dxc6+ ]

[ 6...Qh4! 7.g3 Qf6 8.f3 Nd4 9.0-0 Nxe2 10.Kxe2 Qf5 ]

**7.Qf3 Nd4!** This is what I missed when sacking the knight on f7 and why 6.Qf3 or 6.dxc6 were much stronger (and actually winning) **8.Qxf6 gxf6 9.Nxh8 Nxc2+ 10.Ke2 Nxa1** All forced **11.h3 Nh6** White is still better with an extra pawn but it's difficult mentally when I knew I messed up somewhere before **12.Bb5+?**

[ 12.Kd1 Nf5 13.b3 Nd6 Both a1 and h8 knights are trapped ]

**12...Ke7 13.Bd3 Bg7 14.Bxh7 Bxh8**

**15.b3** With the idea of grabbing the

knight with the dark square bishop  
 [ 15.g4 f5! 16.d3 Nf7 17.Na3 ]  
**15...f5 16.d4 Nc2? 17.Bxh6**  
 [ 17.dxe5! Nf7 18.f4 White has 3  
 pawns for the piece but a monster  
 pawn center ]  
**17...Nxd4+ 18.Kd2 Kf7 19.Rc1**  
 [ 19.h4 c6 20.dxc6 Nxc6 21.h5  
 SF's idea is to create a nice outpost  
 on g6 for the bishop ]  
**19...c6 20.dxc6 Nxc6 21.f4?**  
 [ 21.g4! fxg4 22.h4 And the LSB  
 escapes ]  
**21...Bg7**  
 [ 21...exf4 22.Bxf4 Kg7 ]  
**22.Bg5**  
 [ 22.Bxg7 Kxg7 Trapping the LSB ]  
**22...Bd7 23.g4 Rh8 24.Bxf5 Bxf5**  
**25.gxf5 Rxh3 26.fxe5 Bxe5 27.Nc3**  
 The position is a draw as the f5 going is  
 going to fall. However I am low on time...  
**27...Nd4** Threatening the fork on f3  
**28.Be3**  
 [ 28.Ne4 An elegant way to defend but  
 I was very low on time and did not  
 necessarily want to complicate the  
 position more Rh2+ 29.Kd3 ]  
**28...Nxf5 29.Bxa7??** The decisive  
 blunder **29...Bf4+ 30.Kc2 Bxc1 31.Ne4**  
**Bf4 32.Bb8 Rh2+ 33.Nd2 Bxb8**  
**0-1**

**Ayala,Nicholas** **C41** **1391**  
 **Myers,Steven Lee** **809**  
 MI Felix German TNM: Under 1600 (2.26)

**1.e4 e5 2.Nf3 d6 3.d4 Bg4?!**  
 [ 3...exd4 ]  
**4.Bc4±**  
 [ 4.dxe5 Nd7 5.exd6 Bxd6± ]  
**4...Qf6 5.Nbd2**  
 [ 5.Be3 ]  
**5...exd4 6.Qe2?= Nc6 7.a3?!±**  
 [ 7.h3= ]

**7...a6?! 8.h3= Bxf3? 9.Nxf3± h6**  
**10.Ba2?=**  
 [ 10.Rb1 ]  
**10...0-0-0?!**  
 [ 10...g5= ]  
**11.Rb1 Nge7± 12.b4 Ng6? 13.b5+-**  
**Na7?**  
 [ 13...d3 ]  
**14.bxa6 b6 15.Bd5 Nh4 16.Nxh4**  
**Qxh4 17.Qc4 Kb8 18.Qxd4 f5**  
**19.Rxb6+ Kc8 20.Be6+ Rd7**  
**21.Bxd7+**  
 [ 21.Bxf5! ]  
**21...Kxd7 22.Qa4+ Kc8 23.Qe8+ Qd8**  
**24.Rb8+ Kxb8 25.Qxd8+ Nc8 26.a7+**  
**Kxa7 27.Qxc7+ Ka8 28.Qxc8+**  
**1-0**

**Pagan Griso,Simone** **E32** **1347**  
 **Singer,Andrew** **0**  
 MI Felix German TNM: Under 1600 (2.27)

1.d4 Nf6 2.c4 e6 3.Nc3 Bb4 4.Qc2  
 b6 5.e4 d5 6.cxd5 exd5 7.e5 Bxc3+  
 8.bxc3 Ng8 9.Nf3 h6 10.Bf4 Ne7  
 11.Bd3 Bb7 12.0-0 Nbc6 13.Rae1  
 Qd7 14.Re2 0-0-0 15.h3 g5 16.Bh2  
 g4 17.hxg4 Qxg4 18.Bg3 Rdg8  
 19.Rfe1 h5 20.Nh4 Kb8 21.Re3 Nd8  
 22.Rf3 Bc8 23.Rf4 Qg5 24.c4 Ng6  
 25.Bxg6 fxg6 26.cxd5 Rf8 27.Rxf8  
 Rxf8 28.e6 Re8 29.Qxc7+  
**1-0**

**Starr,Albert Martin** **A00** **1500**  
 **Wong,Brian** **0**  
 MI Felix German TNM: Under 1600 (2.28)

1.b4 d5 2.e3 e5 3.Bb2 e4 4.c4 Nf6  
 5.Qc2 c6 6.b5 Bc5 7.Nc3 0-0 8.d4  
 Bb4 9.c5 b6 10.Qa4 Bxc3+ 11.Bxc3  
 Bd7 12.bxc6 Bxc6 13.Bb5 bxc5

14.Bxc6 Nxc6 15.Qxc6 Rc8 16.Qa4  
cxd4 17.Bxd4 a5 18.Ne2 Rc4 19.Qd1  
Qd6 20.0-0 Ng4 21.Ng3 f5 22.h3 Nh6  
23.Rc1 f4 24.Rxc4 dxc4 25.Nxe4 Qg6  
26.f3 fxe3 27.Bxe3 Nf5 28.Bc5 Rb8  
29.Qd5+ Qf7 30.Qxf7+ Kxf7 31.Nd6+  
Nxd6 32.Bxd6 Rb2 33.Rc1 Ke6  
34.Bc7 Kd5 35.Bxa5 Rxa2 36.Bc3 h5  
37.Bxg7 Ra4 38.f4 Ke4 39.Be5 Kd3  
40.g4 Kd2 41.Rc3 h4 42.g5 Ke2  
43.g6 Ra1+ 44.Kg2 Ra6 45.f5 Rc6  
46.g7 Rc8 47.f6 Re8 48.f7 Rxe5  
49.g8Q  
**1-0**

**Sharan,Shubhankar** **E67**  
**1229**  
 **O'Farrell,Trevor** **1474**  
MI Felix German TNM: Under 1600 (2.29)

1.d4 Nf6 2.c4 g6 3.g3 Bg7 4.Bg2 0-0  
5.Nf3 d6 6.Nc3 c6 7.0-0 Nbd7 8.Bg5  
Qc7 9.Qd2 b6 10.Bh6 Bb7 11.Bxg7  
Kxg7 12.h4 d5 13.cxd5 Nxd5 14.h5  
N7f6 15.h6+ Kg8 16.Nxd5 cxd5  
17.Rac1 Qd6 18.Ne5 Rfd8 19.Rc3  
Ne4 20.Qf4 f6 21.Rf3 g5 22.Qg4 Bc8  
23.Qh5 Be6 24.Rf5 Rf8 25.Nc4 dxc4  
26.Bxe4 Bxf5 27.Bxf5 e6 28.Be4 Rac8  
29.f4 Qxd4+ 30.Kh2 Qxe4 31.fxg5  
Qg6 32.Qxg6+ hxg6 33.gxf6 Rc5  
34.g4 Kh7 35.Kg3 Kxh6 36.Rh1+ Kg5  
**0-1**

**Calvert,Sam** **D20**  
**1331**  
 **Bakke,Erik** **1025**  
MI Felix German TNM: Under 1600 (2.31)

1.d4 d5 2.c4 dxc4 3.e4 b5 4.a4 c6  
5.axb5 cxb5 6.Nc3 a6 7.Nxb5 Nf6  
8.Nc3 Nc6 9.Nf3 Bg4 10.Qa4 Bd7  
11.Qxc4 e6 12.Be2 Bb4 13.Bg5 0-0  
14.e5 Qb6 15.exf6 g6 16.Rxa6 Bxc3+

17.bxc3 Qb1+ 18.Bd1 Rac8 19.Qa2  
Qd3 20.Bd2 Rb8 21.Bc2 Qb5 22.c4  
Qb7 23.0-0 Rfc8 24.Be4 Qc7 25.d5  
exd5 26.cxd5 Nb4 27.Bxb4 Rxb4  
28.Bd3 Rcb8 29.Qd2 Qd8 30.Ne5 Rb2  
31.Qh6  
**1-0**

**Gu,Thomas** **B34**  
**1248**  
 **Otterbach,Renate** **991**  
MI Felix German TNM: Under 1600 (2.32)

1.e4 c5 2.Nf3 g6 3.d4 cxd4 4.Nxd4  
Nc6 5.Nc3 Bg7 6.Be3 Nf6 7.f3 0-0  
8.Qd2 d5 9.0-0-0 dxe4 10.Kb1 Qa5  
11.fxe4 Ng4 12.Nb3 Bxc3 13.bxc3  
Qa3 14.Bc5 Qa4 15.h4 b6 16.Bf2 h5  
17.Bd3 Be6 18.Be3 Kg7 19.Qe2 Na5  
20.Bb5 Bc4 21.Bxa4  
**1-0**

**Agdamag,Samuel** **A01**  
**1400**  
 **Ahrens,Richard William** **1056**  
MI Felix German TNM: Under 1600 (2.33)

1.b3 Nf6 2.Bb2 d6 3.g3 e5 4.Bg2  
Be7 5.Nc3 0-0 6.d4 exd4 7.Qxd4 Nc6  
8.Qd1 a6 9.Nf3 Bf5 10.Nh4 Qd7  
11.Nxf5 Qxf5 12.e4 Qc5 13.0-0 Rad8  
14.Re1 Ne5 15.Nd5 Nxd5 16.exd5 Bf6  
17.Bd4 Nf3+ 18.Qxf3 Bxd4 19.Rad1  
Rfe8 20.Re4 Rxe4 21.Qxe4 Bxf2+  
22.Kh1 Qe3 23.Qh4 Re8 24.Rf1 Qe1  
25.Rxe1 Rxe1+ 26.Bf1 f6 27.Kg2 Bb6  
28.Bd3 h6 29.Qh5 Re5 30.Qg6 f5  
31.Bxf5 Rxf5 32.Qxf5 Kh8 33.Qg6 Bc5  
34.Kf3 Bd4 35.Kf4 Be5+ 36.Kf5 Bf6  
37.h4  
**1-0**

**B11**

□ **Le,Thu**

■ **Vandenhoven,Clarke Raymond**

MI Felix German TNM: Under 1600 (2.34)

1.e4 c6 2.Nf3 d5 3.Nc3 dxe4 4.Nxe4  
 Nf6 5.Bd3 Bg4 6.h3 Bh5 7.0-0 e6  
 8.b3 Be7 9.Bb2 0-0 10.Ng3 Bg6  
 11.Bxg6 hxg6 12.Qe2 Nbd7 13.Rfd1  
 Nb6 14.d4 Qc7 15.c4 Rfd8 16.c5  
 Nbd5 17.Qc2 Nd7 18.Ne5 Bf6  
 19.Nxg6 fxc6 20.Qxg6 Nf8 21.Qg4  
 Qf4 22.Qh5 Rd7 23.Bc1 Qh4 24.Re1  
 Qxh5 25.Nxh5 Bxd4 26.Bb2 Bxb2  
 27.Rab1 Bd4 28.Rbd1 Bxc5 29.Re4  
 Rf7 30.Kh2 Rxf2 31.Rg4 g6 32.Rc1  
 Bb6 33.a4 Rd8 34.Rcc4 Ne3 35.Nf6+  
 Kf7 36.Ne4 Bc7+ 37.Kh1 Rd1#  
**0-1**

**C34**

□ **Oliver,Alexander**

■ **Sroka,Sylvester**

MI Felix German TNM: Extra Rated (2.35)

1.e4 e5 2.f4 Nc6 3.Bc4 exf4 4.Nf3  
 Bc5 5.d4 Nxd4 6.Nxd4 Qh4+ 7.Kf1  
 Ne7 8.c3 Nc6 9.b4 Bb6 10.a4 Ne5  
 11.a5 Nxc4 12.axb6 Ne3+ 13.Bxe3  
 fxe3 14.Qf3 cxb6 15.Nf5 Qf6 16.Ke2  
 d6 17.Qxe3 0-0 18.Rf1 Bxf5 19.Rxf5  
 Qxf5 20.exf5 Rae8 21.Nd2 Rxe3+  
 22.Kxe3 a6 23.Nc4 Re8+ 24.Kf3 Rc8  
 25.Nxd6 Rxc3+ 26.Ke4 Rc7 27.Rd1 f6  
 28.Kd5 b5 29.Re1 h6 30.Re8+ Kh7  
 31.g4 g6 32.Ke6 Kg7 33.Re7+ Rxe7+  
 34.Kxe7 b6 35.Ne8+ Kh7 36.Nxf6+  
 Kg7 37.Ne8+ Kh7 38.f6 h5 39.f7 Kh6  
 40.Kf6 hxg4 41.f8Q+  
**1-0**

**D00**

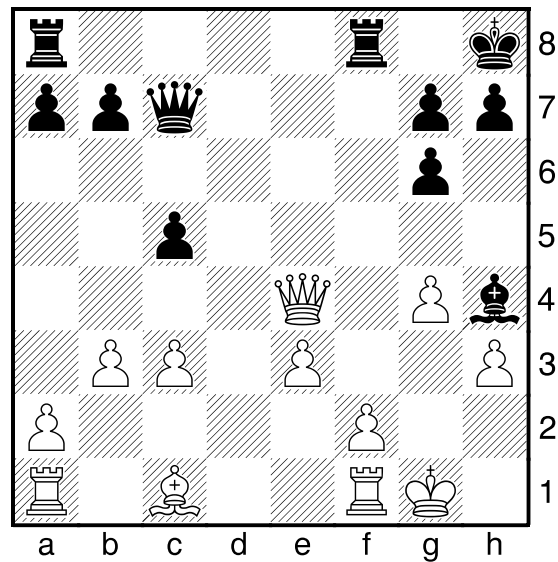
□ **Cao,Danny**

■ **Casares,Nick**

**1095****1600**

MI Felix German TNM: Extra Rated (2.36)  
 [Winslow,Elliott]

1.d4 d5 2.e3 Nf6 3.Bd3 c5 4.c3 Nc6  
 5.Nd2 e5 6.dxe5 Nxe5 7.Bc2 Be7  
 8.Ngf3 Bg4 9.h3 Bh5 10.Qe2 0-0  
 11.g4 Nxf3+ 12.Nxf3 Bg6 13.Bxg6  
 fxg6 14.Nd2 Ne4 15.Nxe4 dxe4  
 16.Qc4+ Kh8 17.Qxe4 Bh4 18.0-0  
 Qc7 19.b3



Rxf2 20.Rxf2 Bxf2+ 21.Kxf2 Qh2+  
 22.Ke1 Rf8 23.Qd3 Qg1+ 24.Kd2  
 Qf2+ 25.Kd1 Qg2 26.Qd2 Rf1+ 27.Kc2  
 Rf2 28.c4 Rxd2+ 29.Bxd2 Qxh3  
 30.Rd1 Qg2 31.Kc1 h5 32.gxh5 gxh5  
 33.Re1 h4 34.e4 h3 35.e5 h2 36.e6  
 h1Q 37.e7 Qxe1+ 38.Bxe1 Qg5+  
 39.Kd1 Qxe7 40.Bc3 Qe4  
**0-1**